



OPERATIONAL BLUEPRINT FOR SCHOOL REENTRY 2020-21

Updated 03/15/2021.

Under ODE’s *Ready Schools, Safe Learners* guidance, each school¹ has been directed to submit a plan to the district² in order to provide on-site and/or hybrid instruction. Districts must submit each school’s plan to the local school board and make the plans available to the public. This form is to be used to document a district’s, school’s or program’s plan to ensure students can return for the 2020-21 school year, in some form, in accordance with Executive Order 20-25(10). Schools must use the [Ready Schools, Safe Learners guidance](#) document as they complete their Operational Blueprint for Reentry. ODE recommends plan development be inclusive of, but not limited to, school-based administrators, teachers and school staff, health and nursing staff, association leadership, nutrition services, transportation services, tribal consultation,³ parents and others for purposes of providing expertise, developing broad understanding of the health protocols and carrying out plan implementation. *It is required that a revised Operational Blueprint be completed and updated when there is a change of Instructional Model.*

1. Please fill out the following information for your school, district or program:

Information Needed	Your Response
Name of School, District or Program	Moalla Elementary, Molalla River School District
Key Contact Person for this Plan	Mike Sauers, Principal Dr. Jan Olson, Clinical Consultant
Phone Number of this Person	503.829.4333
Email Address of this person	Mike,sauers@molallariv.k12.or.us Jan.olson@molallariv.k12.or.us
Sectors and Position Titles of Those Who Informed the Plan	Jan Olson, District Nurse Mike Suaers, Principal, MES Tony Mann, Superintendent Rick Gill, Business Manager Michael Salitore, Director of Supported Education

¹ For the purposes of this guidance: “school” refers to all public schools, including public charter schools, public virtual charter schools, alternative education programs, private schools and the Oregon School for the Deaf. For ease of readability, “school” will be used inclusively to reference all of these settings.

² For the purposes of this guidance: “district” refers to a school district, education service district, public charter school sponsoring district, virtual public charter school sponsoring district, state sponsored public charter school, alternative education programs, private schools, and the Oregon School for the Deaf.

³ Tribal Consultation is a separate process from stakeholder engagement; consultation recognizes and affirms tribal rights of self-government and tribal sovereignty, and mandates state government to work with American Indian nations on a [government-to-government](#) basis.

Information Needed	Your Response
	Dave Luce, District Administrator Kathleen French, Director of Teaching and Learning Allison Holstein, Communications Manager Tony Tiano, Facilities Manager Gregory Rants, Transportation Manager Antonia Etzel, Nutrition Manager Uli Sparks, ELD Teacher Maria Segoviano, ELD Teacher Emily Dahl, Head Secretary Breck Lindaur, Tech Coordinator TOSA
Local Public Health Office(s) or Officer(s)	Sarah Present
Name of Person Designated to Establish, Implement and Enforce Physical Distancing Requirements	Mike Sauers
Intended Effective Date for This Plan	03/29/2021
Educational Service District Region	Clackamas

2. Please list efforts you have made to engage your community (public health information sharing, taking feedback on planning, etc.) in preparing for school in 2020-21. Include information on engagement with communities often underserved and marginalized and those communities disproportionately impacted by COVID-19.

Type your response here (take as much space as you need):

3. Place an X next to the Instructional Model to be used
 - a. On-Site Learning
 - b. Hybrid Learning X**
 - c. Comprehensive Distance Learning
4. If you selected Comprehensive Distance Learning, you only have to enter information for the three parts under the heading Requirements for Comprehensive Distance Learning Operational Blueprint.
5. If you selected On-Site Learning or Hybrid Learning, you have to enter information for all sections under the heading Essential Requirements for Hybrid/On-Site Operational Blueprint and [submit online](#), including updating when you are changing the Instructional Model.

* Note: Private schools are required to comply with only sections 1-3 of the *Ready Schools, Safe Learners* guidance.

REQUIREMENTS FOR COMPREHENSIVE DISTANCE LEARNING OPERATIONAL BLUEPRINT

This section must be completed by any school that is seeking to provide instruction through Comprehensive Distance Learning. For Private Schools, completing this section is optional (not required). Schools providing On-Site or Hybrid Instructional Models do not need to complete this section.

1. Describe why you are selecting Comprehensive Distance Learning as the school’s Instructional Model for the effective dates of this plan.
Type your response here (take as much space as you need):

Molalla High School is selecting hybrid model related to executive order and metrics. CDL will remain active for students/families who have selected full year on-line learning.

2. In completing this portion of the Blueprint you are attesting that you have reviewed the [Comprehensive Distance Learning Guidance](#). Please name any requirements you need ODE to review for any possible flexibility or waiver.
Type your response here (take as much space as you need):

N/A

3. Describe the school’s plan, including the anticipated timeline, for returning to Hybrid Learning or On-Site Learning consistent with the *Ready Schools, Safe Learners* guidance.
Type your response here (take as much space as you need):

The district t has followed an incremental calendar, returning elementary school children to the building in February 2021.

The full school reopening calendar for MRSD is located on the district webpage.

	K/1	2/3	4/5	6	7/8	9-12
	Spring Break- No School					
Week of 3/29-4/2						
Monday, 3/29	In-Person	In-Person	Cohort A- In-Person Cohort B- CDL / Asynchronous	(A-L) In-Person (M-Z) CDL	1st Day- (A-L) In-Person (M-Z) CDL	1st Day- (A-L) In-Person (M-Z) CDL
Tuesday, 3/30	In-Person	In-Person	Cohort A- In-Person Cohort B- CDL / Asynchronous	(A-L) In-Person (M-Z) CDL	(A-L) In-Person (M-Z) CDL	(A-L) In-Person (M-Z) CDL
Wednesday, 3/31	CDL/Asynchronous	CDL/Asynchronous	CDL/Asynchronous	CDL/Asynchronous	CDL/Asynchronous	CDL/Asynchronous
Thursday, 4/1	In-Person	In-Person	Cohort B-In-Person Cohort A-CDL / Asynchronous	(M-Z) In-Person (A-L) CDL	1st Day- (M-Z) In-Person (A-L) CDL	1st Day- (M-Z) In-Person (A-L) CDL
Friday, 4/2	In-Person	In-Person	Cohort B-In-Person Cohort A-CDL / Asynchronous	(M-Z) In-Person (A-L) CDL	(M-Z) In-Person (A-L) CDL	(M-Z) In-Person (A-L) CDL

The remainder of this operational blueprint is not applicable to schools operating a Comprehensive Distance Learning Model.

ESSENTIAL REQUIREMENTS FOR HYBRID OR ON-SITE OPERATIONAL BLUEPRINT

This section must be completed by any school that is providing instruction through On-Site or Hybrid Instructional Models.

Schools providing Comprehensive Distance Learning Instructional Models do not need to complete this section unless the school is implementing the Limited In-Person Instruction provision under the Comprehensive Distance Learning guidance.

Requirements of each section of the guidance are listed under their corresponding heading in the RSSL document. After each set of requirements, there is a prompt where you must enter the details of your On-Site or Hybrid plan that corresponds to that section.

Advisory Health Metrics for Returning to In-Person Instruction (Section 0 of the RSSL Guidance)

Requirements for 0a. RETURNING TO IN-PERSON INSTRUCTION

- Not later than the week of March 29, 2021 all public elementary schools must operate in either an On-Site or Hybrid Instructional Model when they meet the specified county health metrics in the chart on page 15 (green and yellow rows in the chart in Section 0b).
 - A general allowance will be provided if the school has communicated a plan to families and staff with a start date on or before the week of April 5, 2021 and is using the week of March 29, 2021 to train staff for a return to in-person instruction.
 - A general allowance will be provided if the school has a published calendar that shows they are not in session the week of March 29, 2021 and has communicated a plan to families and staff with a start date on or before the week of April 12, 2021 and is using the week of April 5, 2021 to train staff for a return to in-person instruction.
 - A general allowance will be provided if the school is closed to in-person instruction due to a decision made in partnership with a local public health authority or the Oregon Health Authority to move to Comprehensive Distance Learning to address active transmission within a school.
 - Any school not meeting this requirement will be reviewed and may result in loss of eligibility to receive state school funds or other enforcement as prescribed by Governor Brown's [Executive Order 21-06](#).
- Not later than the week of April 19, 2021 all public middle and high schools must operate in either an On-Site or Hybrid Instructional Model when they meet the specified county health metrics in the chart on page 15 (green row in the chart in Section 0b).
 - A general allowance will be provided if the school has communicated a plan to families and staff with a start date on or before the week of April 26, 2021 and is using the week of April 19, 2021 to train staff for a return to in-person instruction.
 - A general allowance will be provided if the school has a published calendar that shows they are not in session the week of April 19, 2021 and has communicated a plan to families and staff with a start date on or before the week of May 3, 2021 and is using the week of April 26, 2021 to train staff for a return to in-person instruction.

- A general allowance will be provided if the school is closed to in-person instruction due to a decision made in partnership with a local public health authority or the Oregon Health Authority to move to Comprehensive Distance Learning to address active transmission within a school.
- Any school not meeting this requirement will be reviewed and may result in loss of eligibility to receive state school funds or other enforcement as prescribed by Governor Brown's [Executive Order 21-06](#).
- The requirement to offer On-Site or Hybrid Instructional Models does not apply to virtual charter schools as defined in ORS 338.005 or a public school that has a permanent instructional model that is predominantly through online courses.
- Public schools may transition a portion or all of the school to Comprehensive Distance Learning when responding in partnership with a local public health authority or the Oregon Health Authority to control active transmission of COVID-19 in the school setting.
- Public schools may transition a portion or all of the school to Comprehensive Distance Learning when they are operating in a county whose metrics place it in the operational status represented by the red row in the chart in section 0b. Public middle and high schools may transition a portion or all of the school to Comprehensive Distance Learning when they are operating in a county whose metrics place it in the operational status represented by the red or yellow row in the chart in section 0b. When county trends are increasing, pause expansion of additional in-person learning and maintain access to current in-person learning for schools that have it in place. Schools are not advised to reduce in-person instruction or revert to Comprehensive Distance Learning based on county metrics if the school can demonstrate the ability to limit transmission in the school environment.
- If your public or private school is operating an On-Site or Hybrid Instructional Model, but is located in a county that does not meet the advisory metrics; that is, an elementary school in a county that is not in the On-Site or Hybrid (green) row or the Elementary On-Site or Hybrid (yellow) row or a middle or high school in a county that is not in the On-Site or Hybrid (green) row (Section 0b); the school must offer access to on-site testing for symptomatic students and staff identified on campus as well as those with known exposures to individuals with COVID. This resource is available to all schools in Oregon. [See guidance from the Oregon Health Authority](#).
 - Schools required to offer access to this program will have two-weeks to be registered, trained, and administering the program when, or if, metrics change in their county in a way that makes this program a requirement.
 - The metrics found in the 0b Section of RSSL are what determines if a school is required to offer the program.
 - The school testing program offers an additional risk-mitigation strategy that is relatively low-burden and can help offset impacts of operating when community spread is higher even if school transmission is low/absent and RSSL protocols are firmly in place. This requirement applies anytime a school is operating in an Instructional Model that is not aligned with the county metrics case data. This is true whether your school began operating in August/September, or took a pause, or opened on January 4, or is just opening for the first time.

- The testing program is for students in grades kindergarten and up and school staff. The program does not include early learning programs.
- Registering for the testing program includes a self-attestation that the program will be offered. Please accept the responsibility to offer the program when you register.
- If your school is operating an On-Site or Hybrid Instructional Model but is located in a county that does not meet the advisory metrics (Section 0b), the school must provide a Comprehensive Distance Learning Instructional Model option for students and families that choose to remain off-site. For schools and districts that are required to comply with all sections (0-8) and supplements to this guidance, the remote option must comply with the requirements of the Comprehensive Distance Learning Instructional Model. The school or district may determine the most beneficial way to staff this option, through partnership with other schools or ESDs or with staff who may be at more risk from COVID-19 or through other means.
- All public and private schools are required to keep their Operational Blueprint up-to-date on [ODE's website](#) and to submit weekly "[Status Reports](#)" that provide essential information regarding how many students are served in person in the implementation of this metrics framework.

Plan Details for 0a.

Please state which operational model describes your school and then detail how your plan meets that requirement:

- *The model which best describes Molalla River School (MRSD) is the initial scenario to meet in person operations by March 29th and April 19th, respectively. MRSD returned elementary students in February and Middle School Students and High School Students in March.*

MRSD is prepared to implement testing as it becomes mandatory in the event of shifting metrics.

Public Health Protocols (Section 1 of the RSSL Guidance)

Requirements for 1a. COMMUNICABLE DISEASE MANAGEMENT PLAN FOR COVID-19

- Conduct a risk assessment as required by OSHA administrative rule [OAR 437-001-0744\(3\)\(g\)](#). (OSHA has developed a [risk assessment template](#))
- Implement measures to limit the spread of COVID-19 within the school setting, including when the school setting is outside a building.
- Update written Communicable Disease Management Plan to specifically address the prevention of the spread of COVID-19. Examples are located in the [Oregon School Nurses Association \(OSNA\) COVID-19 Toolkit](#).
 - Review OSHA requirements for infection control plan to ensure that all required elements are covered by your communicable disease management plan, including making the plan available to employees at their workplace. Requirements are listed in OSHA administrative rule [OAR 437-001-0744\(3\)\(h\)](#).
 - OSHA has developed a sample [infection control plan](#).

- Designate a single point-person at each school to establish, implement, support and enforce all RSSL health and safety protocols, including face coverings and physical distancing requirements, consistent with the **Ready Schools, Safe Learners** guidance and other guidance from OHA. This role should be known to all staff in the building with consistent ways for licensed and classified staff to access and voice concerns or needs.
- Create a simple process that allows for named and anonymous sharing of concerns that can be reviewed on a daily and weekly basis by the designated RSSL building point-person. Example: Anonymous survey form or suggestion box where at least weekly submissions and resolutions are shared in some format.
- Include names of the LPHA staff, school nurses, and other medical experts who provided support and resources to the district/school policies and plans. Review relevant local, state, and national evidence to inform plan.
- Process and procedures established to train all staff in sections 1 - 3 of the **Ready Schools, Safe Learners** guidance. Consider conducting the training virtually, or, if in-person, ensure physical distancing is maintained to the maximum extent possible.
- Protocol to notify the local public health authority ([LPHA Directory by County](#)) of any confirmed COVID-19 cases among students or staff.
- Plans for systematic disinfection of classrooms, common areas, offices, table surfaces, bathrooms and activity areas.
- Process to report to the LPHA any cluster of any illness among staff or students.
- Protocol to cooperate with the LPHA recommendations.
- Provide all logs and information to the LPHA in a timely manner.
- Protocol for screening students and staff for symptoms (see section 1f of the **Ready Schools, Safe Learners** guidance).
- Protocol to isolate any ill or exposed persons from physical contact with others.
- Protocol for communicating potential COVID-19 cases to the school community and other stakeholders (see section 1e of the **Ready Schools, Safe Learners** guidance).
- Create a system for maintaining daily logs for each student/cohort for the purposes of contact tracing. This system needs to be made in consultation with a school/district nurse or an LPHA official. Sample logs are available as a part of the [Oregon School Nurses Association COVID-19 Toolkit](#).
 - If a student(s) is part of a stable cohort (a group of students that are consistently in contact with each other or in multiple cohort groups) that conform to the requirements of cohorting (see section 1d of the **Ready Schools, Safe Learners** guidance), the daily log may be maintained for the cohort.
 - If a student(s) is not part of a stable cohort, then an individual student log must be maintained.
- Required components of individual daily student/cohort logs include:
 - Child's name
 - Drop off/pick up time
 - Parent/guardian name and emergency contact information
 - All staff (including itinerant staff, district staff, substitutes, and guest teachers) names and phone numbers who interact with a stable cohort or individual student
- Protocol to record/keep daily logs to be used for contact tracing for a minimum of four weeks to assist the LPHA as needed.
 - See supplemental guidance on LPHA/school partnering on [contact tracing](#).

- Refer to [OHA Policy on Sharing COVID-19 Information](#)
- Process to ensure that all itinerant and all district staff (maintenance, administrative, delivery, nutrition, and any other staff) who move between buildings keep a log or calendar with a running four-week history of their time in each school building and who they were in contact with at each site.
- Process to ensure that the school reports to and consults with the LPHA regarding cleaning and possible classroom or program closure if anyone who has entered school is diagnosed with COVID-19.
- Designate a staff member and process to ensure that the school provides updated information regarding current instructional models and student counts and reports these data in [ODE's COVID-19 Weekly School Status](#) system.
- Protocol to respond to potential outbreaks (see section 3 of the *Ready Schools, Safe Learners* guidance).

Plan Details for 1a.

Please enter the details of your On-Site or Hybrid plan that correspond to the requirements listed above:

OSHA Required Risk Assessments - Instructional Staff

OSHA Required Reiss Assessments - Custodial Staff

Anonymous electronic forms will be used for sharing concerns with administrators.

See **Molalla River School District Comprehensive Communicable Disease Management Plan (CCDMP)**

Designated Personnel: Page 44

Training page: pages 45-47

COVID-19 School Measures Overview

Key Contacts: page 39

Clusters or Outbreaks: 10-11

Communication to School: Pages 45-47

Staff Communication

Communication to LPHA: Pages 68-71

Communication and Response-LPHA-School

Isolation Measures: Page 53, 61, 63-64

Isolation Requirements

Healthy Environments: Page 49-50

Cleaning and Sanitizing Addendum

Screening Students: Pages 53-61

Screening Guidelines

Screening Overview

Primary Screenings

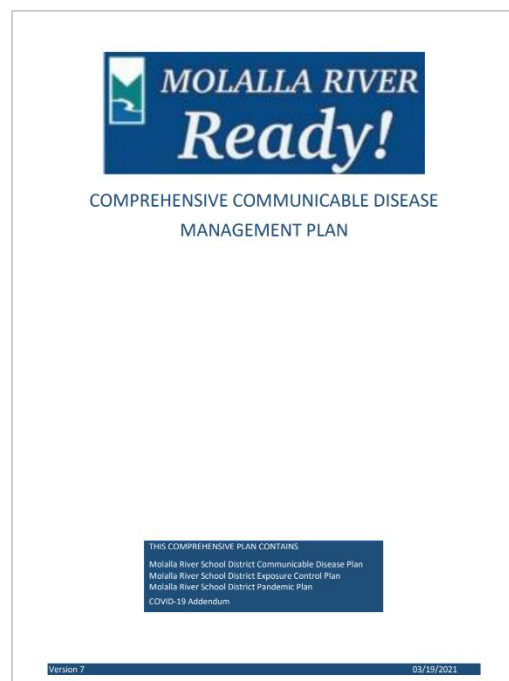
Isolation and Quarantine

Planning for COVID-19 Scenarios in School

Parent at Home Screening

Staff at Home Screening

Cohort Logs: pages 65-68



Requirements for 1b. HIGH-RISK POPULATIONS

- Serve students in high-risk population(s) whether learning is happening through On-Site (*including outside*), Hybrid (partially On-Site and partially Comprehensive Distance Learning models), or Comprehensive Distance Learning models.

Medically Fragile, Complex and Nursing-Dependent Student Requirements

- All districts must account for students who have health conditions that require additional nursing services. Oregon law ([ORS 336.201](#)) defines three levels of severity related to required nursing services:
 - Medically Complex: Are students who may have an unstable health condition and who may require daily professional nursing services.
 - Medically Fragile: Are students who may have a life-threatening health condition and who may require immediate professional nursing services.
 - Nursing-Dependent: Are students who have an unstable or life-threatening health condition and who require daily, direct, and continuous professional nursing services.
- Review [Supplemental Guidance on Community and Health Responsibilities Regarding FAPE in Relation to IDEA During CDL and Hybrid](#).
- Staff and school administrators, in partnership with school nurses, or other school health providers, should work with interdisciplinary teams to address individual student needs. The school registered nurse (RN) is responsible for nursing care provided to individual students as outlined in ODE guidance and state law:
 - Communicate with parents and health care providers to determine return to school status and current needs of the student.
 - Coordinate and update other health services the student may be receiving in addition to nursing services. This may include speech language pathology, occupational therapy, physical therapy, as well as behavioral and mental health services.
 - Modify Health Management Plans, Care Plans, IEPs, or 504 or other student-level medical plans, as indicated, to address current health care considerations.
 - The RN practicing in the school setting should be supported to remain up to date on current guidelines and access professional support such as evidence-based resources from the [Oregon School Nurses Association](#).
 - Service provision should consider health and safety as well as legal standards.
 - Appropriate medical-grade personal protective equipment (PPE) should be made available to [nurses and other health providers](#).
 - Work with an interdisciplinary team to meet requirements of ADA and FAPE.
 - High-risk individuals may meet criteria for exclusion during a local health crisis.
 - Refer to updated state and national guidance and resources such as:
 - U.S. Department of Education Supplemental Fact Sheet: Addressing the Risk of COVID-19 in Preschool, Elementary and Secondary Schools While Serving Children with Disabilities from March 21, 2020.
 - ODE guidance updates for Special Education. Example from March 11, 2020.
 - OAR 581-015-2000 Special Education, requires districts to provide ‘school health services and school nurse services’ as part of the ‘related services’ in order ‘to assist a child with a disability to benefit from special education.’
 - OAR 333-019-0010 Public Health: Investigation and Control of Diseases: General Powers and Responsibilities, outlines authority and responsibilities for school exclusion.

Plan Details for 1b.

Please enter the details of your On-Site or Hybrid plan that correspond to the requirements listed above:

See Molalla River School District Comprehensive Communicable Disease Management Plan (pages 39-40)

Approach to vulnerable populations will include a stepwise communication approach to medically fragile populations and application of necessary individualized measures, restrictions, or accommodations as applicable and coordinated with team and provider.

Staff who are regarded as high risk have the opportunity to self-identify as such and present necessary measures in consultation with their physician to human resources and administration.

Medically complex, medically fragile and nurse dependent students fall under the purview of nurse clinical case management within the school setting.

School nurses will maintain access to the Oregon School Nurses Association and National Association of School Nurses resources as the professional organization for school nurses.

- 1. Health promotion communication will be provided to encourage measures and education on communicable disease prevention.*
- 2. The district nurse will communicate with each family of children who are known to be immunocompromised to request consultation with their physician and specialists regarding school attendance.*
- 3. Students who are immunocompromised will be served remotely at the discretion of the physician specialist for the duration of the pandemic or duration of high community incidence.*

Broad communication will be made to district families requesting students with chronic diagnoses, specifically in high-risk categories to consult with their physicians prior to Staff who are regarded as high risk can self-identify as such and present necessary measures in consultation with their physician to human resources and administration.

Medically complex, medically fragile and nurse dependent students fall under the purview of nurse clinical case management within the school setting.

School nurses will maintain access to the Oregon School Nurses Association and National Association of School Nurses resources as the professional organization for school nurses.

- 1. Health promotion communication will be provided to encourage measures and education on communicable disease prevention.*
- 2. The district nurses will communicate with each family of children who are known to be immunocompromised to request consultation with their physician and specialists regarding school attendance.*
- 3. Students who are immunocompromised will be served remotely at the discretion of the physician specialist for the duration of the pandemic or duration of high community incidence.*
- 4. Broad communication will be made to district families requesting students with chronic diagnoses, specifically in high-risk categories to consult with their physicians prior to school opening regarding perceived risk associated with return to school and obtain updated restrictions, accommodations, and prescriptions.*

- a. *As needed, the RN will update IHP's.*
 - b. *As needed, the multidisciplinary teams will be convened to update 504's and IEP's.*
5. *District Nurses will provide appropriate communications and notifications on student specific needs to applicable staff.*
 6. *1:1 Nurse case managers will consult with physicians and family in advance of school year to determine appropriate measures.*

Families will have the option of a full-time online academy.

Requirements for 1c. PHYSICAL DISTANCING

- Establish a minimum spacing per person when determining room capacity. Calculate only with usable classroom space, understanding that desks and room set-up will require **use of all space** in the calculation. This also applies for professional development and staff gatherings. If implementing Learning Outside guidance, establish an outside learning space for learning that maintains minimum spacing feet per person.
- Support physical distancing in all daily activities and instruction, maintaining six feet between individuals to the maximum extent possible.
- Minimize time standing in lines and take steps to ensure that six feet of distance between students is maintained, including marking spacing on floor, one-way traffic flow in constrained spaces, etc.
- Schedule modifications to limit the number of students in the building or outside learning space (e.g., rotating groups by days or location, staggered schedules to avoid hallway crowding and gathering).
- Plan for students who will need additional support in learning how to maintain physical distancing requirements. Provide instruction; do not employ punitive discipline.
- Staff must maintain physical distancing during all staff meetings and conferences or consider remote web-based meetings.

Plan Details for 1c.

Please enter the details of your On-Site or Hybrid plan that correspond to the requirements listed above:

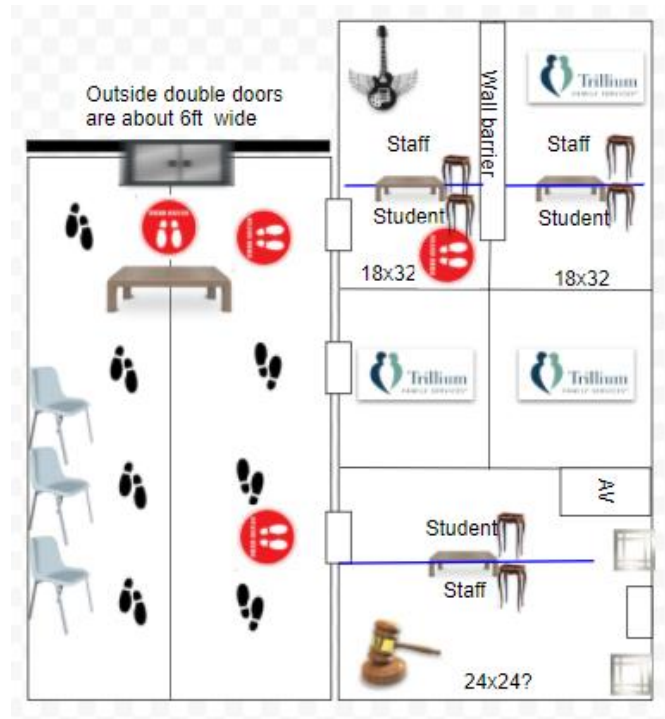
See Molalla River School District Comprehensive Communicable Disease Management Plan (pages 47-48)

Physical or spatial distancing is the intentional physical distance placed between individuals to limit the likelihood of respiratory droplets reaching other individuals. While staying at home and avoiding groups of people are important measures in achieving this, as schools reopen, spatial measures must be taken to ensure physical distance between individuals. Generally speaking, this is 6 feet between individuals, since respiratory droplets often spread between 3 and 6 feet (CDC, 2020). Evidence suggests that spacing as close as 3 feet may approach the benefits of 6

feet of space, particularly if students are wearing face coverings and are asymptomatic” (AAP, 2020a) [Image: OHA]

As per RSSL 3-6 feet per person will be used to establish distancing and room capacity.

The district office space that houses students will be rearranged to allow for control measure application, including distancing



Transition Program

Capacity and Modified Layout

There are currently 8 students in the transition program, these students will be spaced in the transitions center to accomplish appropriate distancing of 6 feet feet per person. As needed spaced will be modified and furniture removed to accomplish appropriate spacing.

- Desks or seating should be at least 6 feet apart when feasible.
- Turn desks to face in the same direction (rather than facing each other), or have students sit on only one side of tables, spaced at appropriate distances.

- Physical guides, such as tape on floors or sidewalks and signs on walls, will be placed to ensure that staff and children remain at least 6 feet apart in lines and at other times (e.g. guides for creating “one-way routes” in hallways, if feasible).

Arrival and Pick Up

- Arrival and drop-off times need not be staggered due to the limited population in this program.
- All students will enter through the MRSD Transition Program entrance and go directly to the MTP room.
- Virtual opportunities will be used whenever feasible.
- Physical distancing will be enforced during arrival and pick up.

Instruction & Activities

- Practices will be adopted to maintain 6 feet distancing during activities and instruction.
- Outdoor spaces will be used as feasible.

Communal Spaces

- Communal and shared spaces (such as cafeteria, which is also the district office lunch room) will be restricted as much as feasible. When used, distancing will be maintained and the room will be cleaned and disinfected between use.
 - Increased restrictions may occur if there has been identified cases in the building.
- If feasible, physical barriers, such as plastic flexible screens will be added between sinks, especially when students cannot be at least 3-6 feet apart.
- Traffic flow will be designated by markers in the building.

Accurate attendance logs must be maintained for contact tracing.

Assessment Center

Refer to MRSD Assessment Center Manual

Capacity and Modification

The assessment center will serve students 1 -2 students at a time. This will equal 2-4 students a day for special education assessments and 10+ students per day for Title 1 and English

Language Learning assessments, not to exceed maximum Cohorting rules. The Transition Center has two additional spaces that can be modified for maximum distancing.

Requirements for 1d. COHORTING

- The smaller the cohort, the less risk of spreading disease. As cohort groups increase in size, the risk of spreading disease increases.
- Each school must have a system for daily logs to ensure contact tracing among the cohort(s) (see section 1a).
- Minimize interaction between students in different stable cohorts (e.g., access to restrooms, activities, common areas). Provide access to All Gender/Gender Neutral restrooms.
- Cleaning and sanitizing surfaces (e.g., desks, dry erase boards, door handles, etc.) must be maintained between multiple students uses, even in the same cohort.
- Design cohorts such that all students (including those protected under ADA and IDEA) maintain access to general education, grade-level academic content standards, and peers.
- Minimize the number of staff that interact with each cohort to the extent possible, staff who interact with multiple stable cohorts must wash/sanitize their hands between interactions with different stable cohorts.
- Elementary staff who interact with multiple cohorts (music, PE, library, paraprofessionals who provide supervision at recesses, etc.) should have schedules altered to reduce the number of cohorts/students they interact within a week. Consider having these staff engage via technology, altering duties so that they are not in close contact with students in multiple cohorts, or adjust schedules to reduce contacts.

Plan Details for 1d.

Please enter the details of your On-Site or Hybrid plan that correspond to the requirements listed above:

This program will be regarded as a single cohort for the purposes of hybrid learning. In addition to the 8-10 students typically in the program, there is one educator, 1-2 Instructional assistants and itinerant staff that provide services periodically. The total potential cohort is less than 20 persons. The student cohort is stable and will not interact with other cohorts.

- *Rosters of this cohort will be kept in Synergy.*
- *Transportation rosters will be identified based on bus route; parent drop off or Special Education Transportation Services.*
- *Itinerant staff will use Itinerant Staff Logs*
- *Itinerant staff will follow procedures for itinerant staff which include physical distancing, facial covers and washing hands when entering and exiting transition space.*

Daily sanitizing practices are per district process will be followed with attention to high touch and shared surfaces.

Students will be required to wash hands after restroom use and use hand sanitizer as they enter the classroom.

Assessment Center

During the course of CDL the Transition Center will be used as an assessment center.

Each student will be served individually with no more than 2 students at a time.

A record of each student's arrival and departure time will be made.

The assessment center will be sanitized between each student.

Staff will practice distancing and wash hands in between each student.

Staff will wear appropriate facial coverings at all times.

Trillium Family Services

Cohorting is N/A as students are seen one at a time. Only students who cannot be served remotely will be served during CDL. During LIPI, TFS students will not enter the district office during Assessment Center hours.

Requirements for 1e. PUBLIC HEALTH COMMUNICATION AND TRAINING

- Communicate to staff at the start of On-Site instruction and at periodic intervals explaining infection control measures that are being implemented to prevent spread of disease.
- Offer initial training to all staff prior to being in-person in any instructional model. Training could be accomplished through all staff webinar, narrated slide decks, online video, using professional learning communities, or mailing handouts with discussion. Training cannot be delivered solely through the sharing or forwarding information electronically or in paper copy form as this is an insufficient method for ensuring fidelity to public health protocols ([see section 8b](#) of the **Ready Schools, Safe Learners** guidance for specific training requirements). Note: Instructional time requirements allow for time to be devoted for professional learning that includes RSSL training.
- Post "COVID -19 Hazard Poster" and "Masks Required" signs as required by OSHA administrative rule [OAR 437-001-0744\(3\)\(d\) and \(e\)](#).
- Develop protocols for communicating with students, families and staff who have come into close contact with a person who has COVID-19.
 - The definition of exposure is being within 6 feet of a person who has COVID-19 for at least 15 cumulative minutes in a day.
 - OSHA has developed a [model notification policy](#).
- Develop protocols for communicating immediately with staff, families, and the school community when a new case(s) of COVID-19 is diagnosed in students or staff members, including a description of how the school or district is responding.
- Periodic interval training also keeps the vigilance to protocols ever present when fatigue and changing circumstances might result in reduced adherence to guidance.
- Provide all information in languages and formats accessible to the school community.

Plan Details for 1e.

Please enter the details of your On-Site or Hybrid plan that correspond to the requirements listed above:

See Molalla River School District Comprehensive Communicable Disease Management Plan pages Pandemic Plan; 45; 61-65

The district will implement and provide communications for multiple areas including health promotion, communication of policies and restrictions and communication regarding potential exposures or exclusions as well as delivery of education, logistics and control measures.

The district provides weekly communication to families regarding planning, education delivery, resources, and COVID-19 related health topics. Previous communications are archived on the district COVID-19 Reopening Dashboard

School Communication

Signs and Messages

- Post signs in highly visible locations (e.g., school entrances, restrooms) that promote everyday protective measures and describe how to stop the spread of germs (such as by properly washing hands and properly wearing a face covering where applicable).
- Broadcast regular announcements on reducing the spread of COVID-19.
- Messages will be included on websites, in newsletters and social media.

Direct Communication

- Health promotion material will be sent weekly during the summer in advance of school reopening specific to COVID-19 themes and subthemes.
- In addition to posting exclusion criteria on web pages and in newsletters families will be advised on policies related to sick students, potential, home isolation criteria, and student exclusion criteria.
- Families and staff will have communication on logistical changes for arrival and departure, physical distancing, schedule changes, and non-pharmaceutical interventions employed.
- Age-appropriate classroom curriculum will be used to encourage positive hygiene behaviors.
- Families will be advised to report if:
 - Their student has symptoms of COVID-19,
 - Their student has had a positive test for COVID-19,
 - Their student was exposed to someone with COVID-19 within the last 14 days.
 - The point of contact, to the best of their ability should attempt to obtain:
 - Date of onset of illness
 - Date of positive test, if applicable
 - Last day of exposure to confirmed case (for case contacts)
 - For students, list of household contacts in the district.
 - Last day present in the school building.
 - Staff should not advise other staff or families of potential exposures.
 - Confidentiality should be strictly observed.
 - Families will be advised when to keep their students' home and when students will be excluded.

Staff Communication

Staff will be given to opportunity to self-identify as high risk. Staff will be advised to report to administration if they:

- Have symptoms of COVID-19,
- Have had a positive test for COVID-19,
- Were exposed to someone with COVID-19 within the last 14 days.

- Sick staff members or students should not return until they have met criteria to discontinue home isolation.
- Staff will be advised when to stay home and when they will be dismissed to home.

Communication Regarding Confirmed Cases

For a complete overview of communication and response of confirmed cases, refer to Communication & Response Chart. In the event of a confirmed case, staff who are made aware should not share information with other staff or families. All measures should be taken to provide confidentiality in communication. Specific communication will be made based on exposure risk, incidence, and necessary interventions, including the potential for short term school closure or exclusion of specific cohorts. These specific practices will be made in collaboration with public health and communicated by specific point persons.

- District specific protocols and practices will be communicated by the superintendent.
- Building specific protocols and interventions will be communicated by the building administrator.
- The RN will inform Clinical consultant, principals, and superintendent of confirmed cases. The principal will inform staff of exposures, as needed.

[\[Link to Communication & Response Algorithm\]](#)

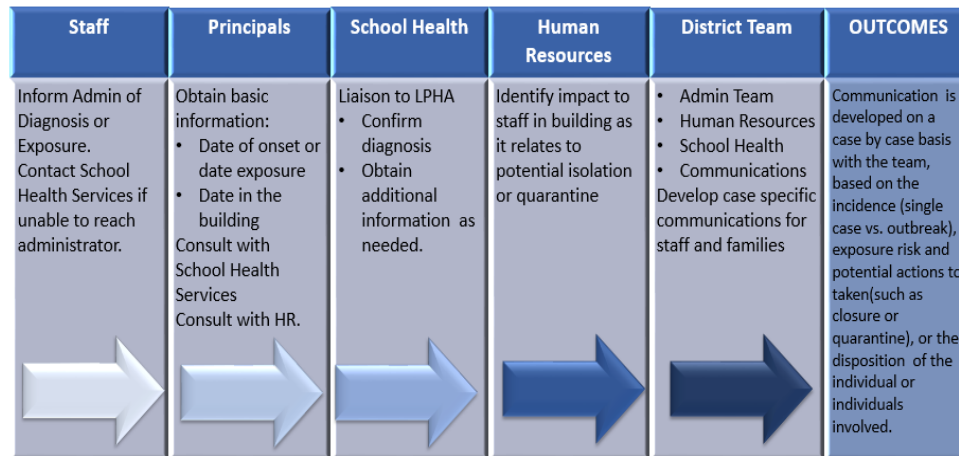
[\[Link to Planning for COVID-19 Scenarios in School\]](#)

The RN, Local Health Department, District Administration and District Communications Manager will collaborate to determine appropriate measures and messaging in the event that cohorts need to be excluded and to inform those who have had close contact with a person diagnosed with COVID-19 to stay home and self-monitor for symptoms. As well, this group will collaborate to determine messaging on short-term closures related to confirmed cases or clusters.

Letters produced to the families will be revised to reflect potential exposure dates, associated risk, potential onset of illness windows and interventions advised by the LPHA.

Public Health Communication

- The district RN is the point of contact from the Local Public Health Authority (LPHA) Communicable Disease (CD) Division and the Deputy Health Officer.
- The district RN is subscribed to daily COVID-19 updates via Oregon Health Authority that reports the daily incident of disease and provides routine updates by region.
- The district RN is subscribed to COVID-19 updates with Clackamas County Public Health and will check the Tri-County COVID-19 Dashboard weekly, at minimum.
- The district RN has established connection with the LPHA School Reopening Coordinator



Requirements for 1f. ENTRY AND SCREENING

- Direct students and staff to stay home if they have COVID-19 symptoms. COVID-19 symptoms are as follows:
 - Primary symptoms of concern: cough, fever (temperature of 100.4°F or higher) or chills, shortness of breath, difficulty breathing, or new loss of taste or smell.
 - Note that muscle pain, headache, sore throat, diarrhea, nausea, vomiting, new nasal congestion, and runny nose are also symptoms often associated with COVID-19. More information about COVID-19 symptoms is available [from CDC](#).
 - In addition to COVID-19 symptoms, students must be excluded from school for signs of other infectious diseases, per existing school policy and protocols. See pages 9-11 of OHA/ODE [Communicable Disease Guidance for Schools](#).
 - Emergency signs that require immediate medical attention:
 - Trouble breathing
 - Persistent pain or pressure in the chest
 - New confusion or inability to awaken
 - Bluish lips or face (lighter skin); greyish lips or face (darker skin)
 - Other severe symptoms
- Screen all elementary grade students for symptoms on-site every day. This can be done visually as well as asking students and staff about any new symptoms or close contact with someone with COVID-19. For students, confirmation from a parent/caregiver or guardian can also be appropriate. Secondary students must also be screened every day. This can be done off-site, prior to coming to school.
- Staff members can self-screen and attest to their own health, but regular reminders of the importance of daily screening must be provided to staff.⁴
 - Anyone displaying or reporting the primary symptoms of concern must be isolated (see section 1i) and sent home as soon as possible. [See table “Planning for COVID-19 Scenarios in Schools.”](#)
 - [Additional guidance](#) for nurses and health staff.

⁴ Self-screening of adult staff members can be efficient but also problematic if not held to the highest of standards and building a culture where staff do not sign-in when they have symptoms that should have them staying or working from home.

- Follow LPHA advice on restricting from school any student or staff known to have been exposed (e.g., by a household member) to COVID-19. [See “Planning for COVID-19 Scenarios in Schools”](#) and the [COVID-19 Exclusion Summary Guide](#).
- Staff or students with a chronic or baseline cough that has worsened or is not well-controlled with medication must be excluded from school. Do not exclude staff or students who have other symptoms that are chronic or baseline symptoms (e.g., asthma, allergies, etc.) from school. See the [COVID-19 Exclusion Summary Guide](#).
- Hand hygiene on entry to school every day: wash with soap and water for 20 seconds or use an alcohol-based hand sanitizer with 60-95% alcohol.

Plan Details for 1f.

Please enter the details of your On-Site or Hybrid plan that correspond to the requirements listed above:

See [Molalla River School District Comprehensive Communicable Disease Management Plan](#) pages 53-63

Students will enter through designated MTP entrance.

Students will have access to hand washing or hand sanitizing at the beginning of each day.

Identification of ill students and staff is crucial in illness prevention in school buildings. All staff and students should have education provided on symptoms in order to self-identify when developmentally possible and identify when students may need to be referred for screening or when individuals need to stay home or be dismissed to home. In addition, families and staff should be well versed in both exclusion criteria and when it is appropriate to stay home in regards to COVID-19 exposure.

Staying Home When Appropriate

It is crucial that school staff and families understand when individuals must stay home. It is important for all staff to role model appropriate behaviors. Communication will be made to regularly to advise families not to send children to school ill and remind staff not to report to work ill. Strict stay at home policies will be endorsed.

[\[Link to Isolation and Quarantine\]](#)

[\[Link to: Planning for COVID-19 Scenarios in School\]](#)

Health Promotion, Prevention and at Home Screening

Parents will be provided Exclusion Criteria and advised to screen their students prior to sending to school. Parents will be advised on all clinical circumstances in which students should not attend school and when children will be excluded from school.

[\[Link to Exclusion Criteria\]](#)

At Home Screening

Parents will be provided Exclusion Criteria and advised to screen their students prior to sending to school-. Parents will be advised on all clinical circumstances in which students should not attend school and when children will be excluded from school

[\[Link to Can My Child Go to School Today?\]](#)

[\[Link to Staff at Home Screening\]](#)

Families and staff will additionally be provided with COVID-19 symptom checkers to use as tools to determine follow up. School staff should not provide medical advice.

- [Clackamas County Coronavirus Checker](#)

Recognize Signs and Symptoms for Visual and Passive Screening

Screening at the beginning of the school day is not logistically feasible related to the volume of time required and the congestion of students in one location and lack of privacy that would result. In addition, temperature screening of all students is not evidenced to reduce transmission in the school setting (AAP, 2020a)

Staff will Passively screening students for signs of illness as the day progresses, requires classroom staff to understand both Exclusion.

Criteria and When to Stay Home, as well, signs and symptoms that would prompt referral to screening by designated staff. Classroom staff must also be aware of symptoms that students may complain of that would prompt referral to the health room. This is specifically important when trying to minimize health room encounters. Thus, preliminary screening that would prompt referral to the health room would include observation or report of the following symptoms:

Look!

Visual Screening (Observational Indicators)

- Unusual Coloration (flushed or pale)
- Unusual Behavior (behavior change, lethargy, unusual fatigue)
- New or significant coughing
- Respiratory symptoms not typical for student
- Shortness of breath
- Chills
- Appearing ill
- Vomiting
- Pink Eye (conjunctivitis)
- Rash

Listen!

Student Complaint (Verbal Indicators)

- Nausea/Vomiting /Diarrhea
- Fever/Chills
- Headache
- Loss of Taste or Smell
- General unwell feeling
- Muscle Pain
- Sore Throat
- Student reports they or a household member was recently diagnosed with COVID-19

[\[Link to Screening Guidelines\]](#)

[\[Link to Screening Overview\]](#)

[\[Link to Primary Screenings\]](#)

Process for Transition Program

- If students are positive for any items listed in Visual Screening or Student Complaint, they will be screened further, as needed the district nurses will be contacted.
- Students will be screened as per the Symptom Screening Algorithm to determine if symptoms are present that require isolation and dismissal as per Communicable Disease Plan and previously listed Exclusion Criteria.

- *Students meeting exclusion criteria should be dismissed to home.*
- *All students must be placed in separate isolation space until picked up by parents.*
- *Students presenting to the office should be logged into the Health Room Log.*
- *Students who are isolated should be logged into COVID-19 Surveillance Log*
- *Health checks will be conducted safely and respectfully and in accordance with any applicable privacy laws and regulations.*

Assessment Center

- *Parents will receive advance communication on not presenting to assessment center if they have been ill in the past 10 days or been in contact with a confirmed case of COVID-19 in the past 14 days.*
- *Students will enter one at a time with their parent through the MTP entrance.*
- *Students will be visually screened as they enter and sign in.*
- *All student, parent, and staff sign in will occur electronically with the assistance of designated staff to record information for cohort tracing.*
- *Any shared equipment will be sanitized between use.*
- *Parents electing to stay inside at the assessment center for the duration of their child's assessment will be placed in a physically distanced waiting area and required to don a facial covering, wash hands upon entry and sign in.*

Trillium Family Services

Link to Trillium Family Services Visitor Screening]

Requirements for 1g. VISITORS/VOLUNTEERS

- Restrict non-essential visitors/volunteers.
 - Examples of essential visitors include DHS Child Protective Services, Law Enforcement, etc.
 - Examples of non-essential visitors/volunteers include: Parent Teacher Association (PTA), classroom volunteers, etc.
- Diligently screen all visitors/volunteers for symptoms and ask questions about symptoms and any close contact with someone diagnosed with COVID-19 upon every entry. Restrict from school property any visitor known to have been exposed to COVID-19. See the [COVID-19 Exclusion Summary Guide](#).
- Visitors/volunteers must wash or sanitize their hands upon entry and exit.
- Visitors/volunteers must maintain six-foot distancing, wear face coverings, and adhere to all other provisions of the **Ready Schools, Safe Learners** guidance.

Plan Details for 1g.

Please enter the details of your On-Site or Hybrid plan that correspond to the requirements listed above:

See *Molalla River School District Comprehensive Communicable Disease Management Plan*
Page 76

Visitors and Volunteers

Visitors are regarded as individuals who are not routine education staff, itinerant staff, or substitute staff.

- *Visitors will be restricted.*
- *Communication will be made to substitutes.*
- *indicate that they cannot report to buildings if they have been sick or in contact with sick persons in the past 14 days.*
- *Physical Distancing will be maintained for essential visitors.*
- *Visitors will be required to wash hands or use hand sanitizer upon arrival.*
- *Visitors will be required to sign and out in at the front office and in any classroom entered.*
 - *Front office sign in should have an acknowledgement indicating the visitor has not been symptomatic or in contact with ill persons the past 14 days.*
- *Face coverings are required.*

For the purposes of the Assessment Center, all parents will be required to wear masks for the duration they are on site and wash hands as they enter the facility.

Requirements for 1h. FACE COVERINGS, FACE SHIELDS, AND CLEAR PLASTIC BARRIERS

- Employers are required to provide masks, face coverings, or face shields for all staff, contractors, other service providers, visitors, and volunteers.
- Face coverings or face shields for all staff, contractors, other service providers, visitors or volunteers informed by [CDC guidelines for Face Coverings](#). Individuals may remove their face coverings while working alone in private offices or when separated by more than 6 feet in outside learning spaces. Face shields are an acceptable alternative only when a person has a medical condition that prevents them from wearing a mask or face covering, when people need to see mouth and tongue motions in order to communicate, or when an individual is speaking to an audience for a short period of time and clear communication is otherwise not possible.
- Face coverings or face shields for all students in grades Kindergarten and up following [CDC guidelines for Face Coverings](#). Face shields are an acceptable alternative only when a student has a medical condition that prevents them from wearing a mask or face covering, or when people need to see the student's mouth and tongue motions in order to communicate.
- Face coverings should be worn both indoors and outdoors, including during outdoor recess.
- Group mask breaks" or "full classroom mask breaks" are not allowed. If a student removes a face covering, or demonstrates a need to remove the face covering for a short-period of time:
 - Provide space well away from peers while the face covering is removed. In the classroom setting, an example could be a designated chair where a student can sit and take a 15 minute or less "sensory break;"
 - Students must not be left alone or unsupervised;
 - Designated area or chair must be appropriately distanced from other students and of a material that is easily wiped down for disinfection after each use;

- Provide additional instructional supports to effectively wear a face covering;
- Provide students adequate support to re-engage in safely wearing a face covering;
- Students cannot be discriminated against or disciplined for an inability to safely wear a face covering during the school day.
- Face masks for school RNs or other medical personnel when providing direct contact care and monitoring of staff/students displaying symptoms. School nurses shall also wear appropriate Personal Protective Equipment (PPE) for their role.
 - [Additional guidance](#) for nurses and health staff.

Accommodations under ADA or IDEA and providing FAPE while attending to Face Covering Guidance

- If any student requires an accommodation to meet the requirement for face coverings, districts and schools must limit the student's proximity to students and staff to the extent possible to minimize the possibility of exposure. Appropriate accommodations could include:
 - Offering different types of face coverings and face shields that may meet the needs of the student.
 - Spaces away from peers while the face covering is removed; students must not be left alone or unsupervised.
 - Short periods of the educational day that do not include wearing the face covering, while following the other health strategies to reduce the spread of disease.
 - Additional instructional supports to effectively wear a face covering.
- For students with existing medical conditions and a physician's orders to not wear face coverings, or other health related concerns, schools/districts **must not** deny any in-person instruction.
- Schools and districts must comply with the established IEP/504 plan prior to the closure of in-person instruction in March of 2020, or the current plan in effect for the student if appropriately developed after March of 2020.
 - If a student eligible for, or receiving services under a 504/IEP, **cannot** wear a face covering due to the nature of the disability, the school or district must:
 1. Review the 504/IEP to ensure access to instruction in a manner comparable to what was originally established in the student's plan including on-site instruction with accommodations or adjustments.
 2. Not make placement determinations solely on the inability to wear a face covering.
 3. Include updates to accommodations and modifications to support students in plans.
 - For students protected under ADA/IDEA, who abstain from wearing a face covering, or students whose families determine the student will not wear a face covering, the school or district must:
 1. Review the 504/IEP to ensure access to instruction in a manner comparable to what was originally established in the student's plan.
 2. The team must determine that the disability is not prohibiting the student from meeting the requirement.
 - If the team determines that the disability is prohibiting the student from meeting the requirement, follow the requirements for students eligible for, or receiving services under, a 504/IEP who cannot wear a face covering due to the nature of the disability,

- If a student’s 504/IEP plan included supports/goals/instruction for behavior or social emotional learning, the school team must evaluate the student’s plan prior to providing instruction through Comprehensive Distance Learning.
- 3. Hold a 504/IEP meeting to determine equitable access to educational opportunities which may include limited in-person instruction, on-site instruction with accommodations, or Comprehensive Distance Learning.
- For students not currently served under an IEP or 504, districts must consider whether student inability to consistently wear a face covering or face shield as required is due to a disability. Ongoing inability to meet this requirement may be evidence of the need for an evaluation to determine eligibility for support under IDEA or Section 504.
- If a staff member requires an accommodation for the face covering or face shield requirements, districts and schools shall work to limit the staff member’s proximity to students and staff to the extent possible to minimize the possibility of exposure.

Plan Details for 1h.

Please enter the details of your On-Site or Hybrid plan that correspond to the requirements listed above:

See Molalla River School District Comprehensive Communicable Disease Management Plan page 51-53

Requirements around face coverings and PPE will evolve to align with current state public health guidelines, new or revised mandates and ODE’s requirements for the school setting.

When face coverings are used:

- *Cloth face coverings must be laundered regularly.*
- *Face coverings cannot be shared.*
- *New disposable face covering must be used daily.*
- *Single use PPE should not be re-used.*
- *Face shields that are reusable should be designated to individual staff.*
- *Plastic face shields should be wiped down regularly.*

Students

All students’ kindergarten and older will be expected to wear face coverings in the school setting.

- *Children who experience a medical condition or disability that precludes them from safely wearing a face covering will be addressed on individual basis in collaboration with family, IEP team, physician, district RN and administration, as applicable using the RSSL Guidance for Decision Making Concerning Student Use of Face Coverings and Face Shields*
- *Face shields may be an acceptable alternative when a person has a condition that prevents them from wearing a mask or face covering.*
- *Existing evidence does not support most diagnoses as a contraindication for wearing masks (Appendix H).*
- *Students who abstain from wearing a face covering, or students whose families determine the student will not wear a face covering during On-Site instruction must be provided access to instruction. Comprehensive Distance Learning may be an option; however, additional provisions*

apply to students protected under ADA and IDEA. See [ODE's Guidance for Decision Making Concerning Student Use of Face Coverings and Face Shields](#).

- *Students requiring breaks from masks must have a designated space to remove masks and take breaks that respects distancing and ventilation requirements. Breaks will also respect student dignity and developmental level.*
 - *Designated spaces may be provided for students who require sensory breaks from masks, which should not exceed 15 minutes.*
 - *Full class mask breaks are prohibited.*

Staff

Personal Protective Equipment (PPE) is specialized clothing or equipment used by staff in an occupational setting to reduce the risk of infection transmission or risk of chemical exposure. The district Exposure Control Plan (pages 15-21) should be consulted for necessary and appropriate use of PPE. For the purposes of COVID-19 response, where cloth facial coverings are used in unprecedented frequency, it should be clarified that face coverings are not synonymous with masks. Face coverings may include masks, cloth covers, or shields (Appendix I).

PPE will be advised based on the interaction with students, or the risk involved related to frequency and type of interaction, volume and duration of interaction and the developmental stages and health status of the individuals involved. For example, clinical staff or staff in isolation spaces may require a higher level of PPE than staff teaching in an academic space.

All staff, contractors, other service providers, visitors or volunteers in the school setting are required to wear face coverings.

- *Individuals may remove masks when working alone in an office or classroom.*
- *Face shield should be used on a limited basis when determined to be necessary for delivery of education or therapy such as in the case where when people need to see mouth and tongue motions to communicate, or when an individual is speaking to an audience for a short period of time and clear communication is otherwise not possible.*

[\[Link to Donning and Doffing PPE\]](#)

Assessment Center

Parents, students and staff entering and waiting at the assessment center will be required to wear face covering that is consistent with RSSL and CDC guidance.

Students that require a sensory break from masks will be permitted to remove mask in a well ventilated space, physically distanced more than 6 feet from the supervising adult for up to 15 minutes, cumulatively.

Parents may elect to take their student outside, as needed, but physical distancing from non-household contacts must be maintained, and the duration may not exceed 15 minutes, so as not to interrupt other assessment center appointments

Requirements for 1i. ISOLATION AND QUARANTINE

- Protocols for exclusion and isolation for sick students and staff whether identified at the time of bus pick-up, arrival to school, or at any time during the school day.
- Protocols for screening students, as well as exclusion and isolation protocols for sick students and staff identified at the time of arrival or during the school day. See the [COVID-19 Exclusion Summary Guide](#).
 - Work with school nurses, health care providers, or other staff with expertise to determine necessary modifications to areas where staff/students will be isolated. If two students present COVID-19 symptoms at the same time, they must be isolated at once. If separate rooms are not available, ensure that six feet distance is maintained. Do not assume they have the same illness. Consider if and where students and staff will be isolated during learning outside. Create a comfortable outdoor area for isolation or follow plan for in building isolation.
 - Consider required physical arrangements to reduce risk of disease transmission.
 - Plan for the needs of generally well students who need medication or routine treatment, as well as students who may show signs of illness.
 - [Additional guidance](#) for nurses and health staff for providing care to students with complex needs.
- Students and staff who report or develop symptoms must be isolated in a designated isolation area in the school or outside learning space, with adequate space and staff supervision and symptom monitoring by a school nurse, other school-based health care provider or school staff until they are able to go home. Anyone providing supervision and symptom monitoring must wear appropriate face covering or face shields.
 - School nurses and health staff in close contact with symptomatic individuals (less than 6 feet) must wear a medical-grade face mask. Other Personal Protective Equipment (PPE) may be needed depending on symptoms and care provided. Consult a nurse or health care professional regarding appropriate use of PPE. Any PPE used during care of a symptomatic individual must be properly removed and disposed of prior to exiting the care space.
 - After removing PPE, hands shall be immediately cleaned with soap and water for at least 20 seconds. If soap and water are not available, hands can be cleaned with an alcohol-based hand sanitizer that contains 60-95% alcohol.
 - If able to do so safely, a symptomatic individual shall wear a face covering.
 - To reduce fear, anxiety, or shame related to isolation, provide a clear explanation of procedures, including use of PPE and handwashing.
- Establish procedures for safely transporting anyone who is sick to their home or to a health care facility.
- Staff and students who are ill must stay home from school and must be sent home if they become ill at school, particularly if they have COVID-19 symptoms. Refer to table in [“Planning for COVID-19 Scenarios in Schools.”](#)
- Involve school nurses, School Based Health Centers, or staff with related experience (Occupational or Physical Therapists) in development of protocols and assessment of symptoms (where staffing exists).
- Record and monitor the students and staff being isolated or sent home for the LPHA review.
- The school must provide a remote learning option for students who are required to be temporarily off-site for isolation and quarantine.

Plan Details for 1i.

Please enter the details of your On-Site or Hybrid plan that correspond to the requirements listed above:

See Molalla River School District Comprehensive Communicable Disease Management Plan pages 10, 53-55; 57-64

Screening: See Section 1f

Screening Students: Pages 53-64

Screening Guidelines

Screening Overview

Primary Screenings

Isolation and Quarantine

Planning for COVID-19 Scenarios in School

Parent at Home Screening

Staff at Home Screening

Isolate Those Who Are Sick

Each school must have designated personnel and designated isolation space. Available PPE must be available for School nurses and designated staff to use Standard and Transmission-Based Precautions, as per the District Exposure Control Plan and The district Communicable Disease Plan .

Students who are determined to require exclusion based on current rules and guidelines will be isolated under the following circumstances pending parent pick up:

- **Illness:** Identification of students meeting exclusion criteria based on screening.
- **Exposure:** Children identified as having been ill and having a pending test for COVID-19, OR having tested positive for COVID-19, OR having been exposed to someone with COVID-19 symptoms.

Isolation Measures:

- Immediately separate students who are determined to have symptoms meeting exclusion criteria to the designated isolation area.
- Remain calm and practice measures to maintain student privacy, confidentiality, and dignity to the highest extent feasible.
- Student will be provided a facial mask (if they can safely wear one).
- Staff should wear a facial mask and gloves and maintain physical distancing.
- Do not leave student unattended.
- If more than one student is in an isolation space, appropriate distance or barriers and privacy must be maintained between students.
- Ensure students are appropriately logged into Communicable Disease Surveillance Logs.

Reinforce appropriate exclusion action with parents (e.g., if student has fever, they must remain home until 24 hours' symptom free without use of anti-fever medications or 48 hours without vomiting and diarrhea, or/and until released by provider or LPHA)

Isolation Space

An appropriate isolation space as described in the Communicable Disease Plan and consistent with state legislation, should be accessible in each building. The intent is to mitigate the risk of transmission from an ill individual to well individuals.

The isolation space should observe public health guidelines to the extent feasible to ensure each element of infection prevention is followed as per Transmission Based Controls and COVID-19 guidance correctly. CDC guidelines in the chart below should be visited with the following four requirements in mind:

1. Isolation space must be separate from routine health room.
2. Students must be supervised while in isolation space.
3. Staff must have appropriate PPE while in isolation space.
4. Appropriate physical distancing, barriers and confidentiality must be maintained in the isolation space.

[\[Link to Isolation Requirements\]](#)

[\[Link to COSIE Procedures\]](#)

Assessment Center

Students developing illness during the course of an assessment will be dismissed to home.

Trillium Family Services

Students developing illness during services will be dismissed to home.

Facilities and School Operations (Section 2 of the RSSL Guidance)

Some activities and areas will have a higher risk for spread (e.g., band, choir, science labs, locker rooms). When engaging in these activities within the school setting, schools will need to consider additional physical distancing or conduct the activities outside (where feasible). Additionally, schools should consider sharing explicit risk statements for instructional and extra-curricular activities requiring additional considerations (see section 5f of the *Ready Schools, Safe Learners* guidance).

Requirements for 2a. ENROLLMENT

(Note: Section 2a does not apply to private schools.)

- Enroll all students (including foreign exchange students) following the standard Oregon Department of Education guidelines.
- The temporary suspension of the 10-day drop rule does not change the rules for the initial enrollment date for students:
 - The ADM enrollment date for a student is the first day of the student’s actual attendance.
 - A student with fewer than 10 days of absence at the beginning of the school year may be counted in membership prior to the first day of attendance, but not prior to the first calendar day of the school year.
 - If a student does not attend during the first 10 session days of school, the student’s ADM enrollment date must reflect the student’s actual first day of attendance.
 - Students who were anticipated to be enrolled, but who do not attend at any time must not be enrolled and submitted in ADM.
- If a student has stopped attending for 10 or more days, districts must continue to try to engage the student. At a minimum, districts must attempt to contact these students and their families weekly to either encourage attendance or receive confirmation that the student has transferred or has withdrawn from school. This includes students who were scheduled to start the school year, but who have not yet attended.
- When enrolling a student from another school, schools must request documentation from the prior school within 10 days of enrollment per OAR 581-021-0255 to make all parties aware of the transfer. Documentation obtained directly from the family does not relieve the school of this

responsibility. After receiving documentation from another school that a student has enrolled, drop that student from your roll.

- Design attendance policies to account for students who do not attend in-person due to student or family health and safety concerns.
- When a student has a pre-excused absence or COVID-19 absence, the school district must reach out to offer support at least weekly until the student has resumed their education.
- When a student is absent beyond 10 days and meets the criteria for continued enrollment due to the temporary suspension of the 10 day drop rule, continue to count them as absent for those days and include those days in your Cumulative ADM reporting.

Plan Details for 2a.

Please enter the details of your On-Site or Hybrid plan that correspond to the requirements listed above:

- *Students (including foreign exchange students) will continue to be enrolled in MRSD as per current standards and guidelines and per OAR 581-021-0255*
- *Students who are absent due to LPHA restrictions for COVID-19 for 10 or more consecutive school days will not be “10-day dropped”. If the system automatically dis-enrolls the student, then the student will be re-enrolled.*
- *Students who must be isolated or quarantined for extended period will be able to access CDL or other at home education opportunities.*
- *Students who have fragile health or fragile household members will be permitted to engage in full time distance learning.*
- *Enrollment in full-time online academy will be an option and student teacher engagement will be established to measure attendance.*
- *Placement in the Transition Program is based on age and IEP placement.*
- *Enrollment and attendance are not applicable to the Assessment Center.*

[Link to: [Addendum for Enrollment and Attendance](#)]

Requirements for 2b. ATTENDANCE

(Note: Section 2b does not apply to private schools.)

- Grades K-5 (self-contained): Attendance must be taken at least once per day for all students enrolled in school, regardless of the instructional model (On-Site, Hybrid, Comprehensive Distance Learning, online schools).
- Grades 6-12 (individual subject): Attendance must be taken at least once for each scheduled class that day for all students enrolled in school, regardless of the instructional model (On-Site, Hybrid, Comprehensive Distance Learning, online schools).
- Alternative Programs: Some students are reported in ADM as enrolled in a non-standard program (such as tutorial time), with hours of instruction rather than days present and days absent. Attendance must be taken at least once for each scheduled interaction with each student, so that local systems can track the student’s attendance and engagement. Reported hours of instruction continue to be those hours in which the student was present.

- Online schools that previously followed a two check-in per week attendance process must follow the Comprehensive Distance Learning requirements for checking and reporting attendance.
- Provide families with clear and concise descriptions of student attendance and participation expectations as well as family involvement expectations that take into consideration the home environment, caregiver’s work schedule, and mental/physical health.

Plan Details for 2b.

Please enter the details of your On-Site or Hybrid plan that correspond to the requirements listed above:

- *Enhanced attendance procedures will be endorsed to ensure accurate attendance records are maintained for the purposes of contact tracing.*
- *Additional time will be allotted during morning attendance to allow time for passive screening of students for illness.*
- *Students engaged in part time or full-time distancing learning will have mechanism to provide attendance and participation validation via direct interaction with the teacher(s) and specialist(s).*
- *Students engaged in distance learning and/or hybrid will have a mechanism to provide attendance and participation validation via direct interaction with the teacher of record.*
- *The appropriate licensed instructional staff member will provide a two-way communication method for students to*
- *check in at least twice a week to determine whether adequate student progress is being met.*
- *Student attendance will be taken by the identified teacher of record, not another staff member.*
- *Attendance for students who are enrolled either full time online and/or hybrid will be recorded and reported according to ODE standards and guidelines.*
- *Part time students receiving online and/or hybrid instruction will be reported according to ODE guidelines and appropriate program types.*

Addendum for Enrollment and Attendance

Requirements for 2c. TECHNOLOGY

- Update procedures for district-owned or school-owned devices to match cleaning requirements (see section 2d of the **Ready Schools, Safe Learners** guidance).
- Procedures for return, inventory, updating, and redistributing district-owned devices must meet physical distancing requirements.
- If providing learning outside and allowing students to engage with devices during the learning experiences, provide safe charging stations.

Plan Details for 2c.

Please enter the details of your On-Site or Hybrid plan that correspond to the requirements listed above:

- *The district will prioritize one Chromebook per students.*
- *Any shared technology devices will be included in routine disinfecting of high touch surfaces.*
- *Use of technology will be consistent with existing technology policies and use agreements.*

- *Students checking out devices in the schools setting will maintained appropriate physical distancing. Devices should be cleaned prior to subsequent use.*
- *If students are checking out devices long term for distance learning due to medical accommodation of at home learning or re-closure of school, appropriate physical distancing measures and personal protective measures will be practiced during these transactions including drive up check out and return as needed.*

[\[Link to: MRSD COVID-19 Technology Guidelines\]](#)

[\[Link to Personal Property Addendum\]](#)

Requirements for 2d. SCHOOL SPECIFIC FUNCTIONS/FACILITY FEATURES

- **Handwashing:** All people on campus shall be advised and encouraged to frequently wash their hands or use hand sanitizer.
- **Equipment:** Develop and use sanitizing protocols for all equipment used by more than one individual or purchase equipment for individual use.
- **Events:** Cancel, modify, or postpone field trips, assemblies, athletic events, practices, special performances, school-wide parent meetings and other large gatherings to meet requirements for physical distancing.
- **Transitions/Hallways:** Limit transitions to the extent possible. Create hallway procedures to promote physical distancing and minimize gatherings.
- **Personal Property:** Establish policies for identifying personal property being brought to school (e.g., refillable water bottles, school supplies, headphones/earbuds, cell phones, books, instruments, etc.).

Plan Details for 2d.

Please enter the details of your On-Site or Hybrid plan that correspond to the requirements listed above:

- ***Handwashing:** Handwashing practices consistent with the Comprehensive Communicable Disease Management Plan will be implemented at the building level, including the addition of handwashing stations and access to hand sanitizer.*
- ***Equipment:** High touch and shared surfaces will be sanitized frequently. Appropriate sanitizers will be made available for shared equipment that is appropriate based on the type of equipment or device.*
- *Immunocompromised students shall have designated equipment.*
- ***Events:** Events, gatherings, field trips and athletics shall operate under current executive orders and phase level opening by county.*
- *Events, gathering and field trips will not be planned until direction is provided from the district office under the guidance of RSSL.*
- *Physical assemblies will be discontinued until large gatherings are permitted. Virtual assemblies and gathering will be used where feasible. Any gatherings that occur will maintain all executive orders and physical distancing and personal protective requirements.*
- ***Transitions/Hallways:** Transitions will be staggered to the extent feasible. Reduced student populations within the building will reduce potential student interaction.*
- ***Personal Property:** Personal property brought to school shall be limited to items that are necessary. Refillable water bottles are encouraged but should be labeled with the student's name and not shared between peers. Personal items should remain in the student's backpack or locker or on their person to the extent feasible. Instruments and athletic equipment should be clearly marked and kept in designated locations.*

[\[Link to Personal Property Addendum\]](#)

Requirements for 2e. ARRIVAL AND DISMISSAL

- Physical distancing, stable cohorts, square footage, and cleaning requirements must be maintained during arrival and dismissal procedures.
- Create schedule(s) and communicate staggered arrival and/or dismissal times.
- Assign students or cohorts to an entrance; assign staff member(s) to conduct visual screenings (see section 1f of the **Ready Schools, Safe Learners** guidance).
- Ensure accurate sign-in/sign-out protocols to help facilitate contact tracing by the LPHA. Sign-in procedures are not a replacement for entrance and screening requirements. Students entering school after arrival times must be screened for the primary symptoms of concern.
 - Eliminate shared pen and paper sign-in/sign-out sheets.
 - Ensure hand sanitizer is available if signing children in or out on an electronic device.
- Ensure alcohol-based hand sanitizer (with 60-95% alcohol) dispensers are easily accessible near all entry doors and other high-traffic areas. Establish and clearly communicate procedures for keeping caregiver drop-off/pick-up as brief as possible.

Plan Details for 2e.

Please enter the details of your On-Site or Hybrid plan that correspond to the requirements listed above:

Specific entrances will be designated for each cohort entering the building. Each cohort will enter at a In general, staggered arrival is practiced across the district as is staggered scheduling. Due to the limited number of attendees in the Transition Program staggered schedules and arrival is unnecessary.

Transition Center

- *Staggered times are not required due to the limited number of Transition Students. The entire program will be regarded as one cohort.*
- *Families shall screen students for illness at home prior to sending students to school. Ill students should not report to school.*
- *Hand sanitizers should be available at each building entrance.*
- *Student arriving at the same time will enter building through the designated entrance in a distanced fashion.*
- *Designated staff will be present at the entry/exit during arrival and departure.*
- *Students who must be isolated when exiting the school bus should be permitted to exit the bus when designated personnel report to retrieve the student. Students being dropped off will enter the school at a designated time and designated location. Parents will not enter the school.*
- *The entry of the school shall be marked with prompts to maintain physical distancing.*
- *Students will report to their class immediately upon arrival.*
- *Attendance will be taken. Accurate attendance is crucial for appropriate contact tracing.*
- *Teacher will visually/passively screen students for appearance of illness. Students who appear ill should be sent to the office.*
- *A sign in sheet will be present in each class for itinerant staff or staff circulating to classrooms*
- *Students arriving late should be recorded in attendance logs.*
- *Students being picked up during the course of the day will require sign out at the front office. Parent and caregiver visits to office should be brief and parents must also sign a visitors' log.*

- *Students should leave the building in a staggered fashion at the end of the day, being systematically dismissed and endorsing all spatial distancing measures.*
- *Students shall endorse physical distancing measures when boarding buses to return home.*

Assessment Center

Assessment Center will be held in the DO Transition Center during CDL, it will only assess 1-2 students at a time.

- *Each student will arrive at their scheduled time.*
- *Students will follow traffic pattern and social distance indicators and markers.*
- *Each student and parent will wear a mask when entering the center.*
- *Each student and parent will sign in and be screened for illness and COVID-19 contact.*
- *Each student and parent will wash their hands or use hand sanitizer upon entry.*
- *Each student will be taken individually to an appropriately modified assessment room with Plexiglas barrier between the student and assessor.*
- *The parent will have the option of waiting in a physically distanced waiting area with a mask or returning at the end of the assessment.*
- *At the end of the assessment the student will be escorted to the parent and leave through the designated door with their parent.*

Trillium Family Services

Entry will be one patient at a time, and will be through the MTP Entrance. Client will go straight to TFS services area.

Requirements for 2f. CLASSROOMS/REPURPOSED LEARNING SPACES

- **Seating:** Rearrange student desks and other seat spaces so that staff and students' physical bodies are six feet apart to the maximum extent possible while also maintaining 6 feet distancing
- **Materials:** Avoid sharing of community supplies when possible (e.g., scissors, pencils, etc.). Clean these items frequently. Provide hand sanitizer and tissues for use by students and staff.
- **Handwashing:** Remind students (with signage and regular verbal reminders from staff) of the utmost importance of hand hygiene and respiratory etiquette. Respiratory etiquette means covering coughs and sneezes with an elbow or a tissue. Tissues shall be disposed of in a garbage can, then hands washed or sanitized immediately.
 - Wash hands with soap and water for 20 seconds or use an alcohol-based hand sanitizer with 60-95% alcohol.

Plan Details for 2f.

Please enter the details of your On-Site or Hybrid plan that correspond to the requirements listed above:

Physical distancing measures as outlined in 1c will be endorsed.

- **Seating:** Seating will be arranged to maintain spatial distancing. Physical distancing rules will be applied to seating as per section 1c.
- **Materials:** Individualized materials including technology will be maximized as per technology measures in 2c and district disinfecting guidance.
- **Handwashing:** Handwashing will be practiced in repurposed spaces consistently with the remainder of the campus as outlined in the Comprehensive Communicable Disease Management Plan.

Assessment Center

One student and one staff will be use and assessment space at a time that is physically distanced and has Plexiglas barriers. Space will be sanitized between use

Requirements for 2g. PLAYGROUNDS, FIELDS, RECESS, BREAKS, AND RESTROOMS

- Keep school playgrounds closed to the public until park playground equipment and benches reopen in the community (see Oregon Health Authority’s [Specific Guidance for Outdoor Recreation Organizations](#)).
- After using the restroom students must wash hands with soap and water for 20 seconds. Soap must be made available to students and staff. For learning outside if portable bathrooms are used, set up portable hand washing stations and create a regular cleaning schedule.
- Before and after using playground equipment, students must wash hands with soap and water for 20 seconds or use an alcohol-based hand sanitizer with 60-95% alcohol.
- Designate playground and shared equipment solely for the use of one cohort at a time. Outdoor playground structures require normal routine cleaning and do not require disinfection. Shared equipment (balls, jump ropes, etc.) should be cleaned and disinfected at least daily in accordance with [CDC guidance](#).
- Cleaning requirements must be maintained (see section 2j of the *Ready Schools, Safe Learners* guidance).
- Maintain physical distancing requirements, stable cohorts, and square footage requirements.
- Provide signage and restrict access to outdoor equipment (including sports equipment, etc.).
- Design recess activities that allow for physical distancing and maintenance of stable cohorts.
- Clean all outdoor equipment at least daily or between use as much as possible in accordance with [CDC guidance](#).
- Limit the number of employees gathering in shared spaces. Restrict use of shared spaces such as conference rooms, break rooms, and elevators by limiting occupancy or staggering use, maintaining six feet of distance between adults.

Plan Details for 2g.

Please enter the details of your On-Site or Hybrid plan that correspond to the requirements listed above:

Across the district playgrounds will be closed to the public as per current Oregon guidelines. During school hours’ playgrounds will limit cohorts and cohort overlap on playground equipment and equipment will be cleaned regularly as per current CDC guidelines.

Travel to playgrounds will occur in a physically distanced, one-way traffic pattern. Students will sanitize hands before and after recess.

Indicators will be used to promote physical distancing and designated staff will be used to enforce distancing measures.

Commons areas will be restricted and used only when necessary to maximize infection control and distancing. Commons areas will be sanitized between cohort use.

One-way traffic patterns or physically distanced two way patterns will be established.

Transition Program

The transition program does not have recess access.

Students will use bathrooms one at a time.

Students will be advised to wash their hands when they are done with the bathroom and will be required to use hand sanitizer upon return to the classroom.

Assessment Center

Assessment Center will not have recess access. Access to restroom will be provided prior to assessments and will endorse distancing and hygiene practices.

Requirements for 2h. MEAL SERVICE/NUTRITION

- Include meal services/nutrition staff in planning for school reentry.
- Prohibit self-service buffet-style meals.
- Prohibit sharing of food and drinks among students and/or staff.
- At designated meal or snack times, students may remove their face coverings to eat or drink but must maintain six feet of physical distance from others, and must put face coverings back on after finishing the meal or snack.
- Staff serving meals and students interacting with staff at mealtimes must wear face coverings (see section 1h of the **Ready Schools, Safe Learners** guidance). Staff must maintain 6 feet of physical distance to the greatest extent possible. If students are eating in a classroom, staff may supervise from the doorway of the classroom if feasible.
- Students and staff must wash hands with soap and water for 20 seconds or use an alcohol-based hand sanitizer with 60-95% alcohol before meals and shall be encouraged to do so after.
- Appropriate daily cleaning of meal items (e.g., plates, utensils, transport items).
- Cleaning and sanitizing of meal touch-points and meal counting system between stable cohorts.
- Adequate cleaning and disinfection of tables between meal periods.
- Since staff must remove their face coverings during eating and drinking, limit the number of employees gathering in shared spaces. Restrict use of shared spaces such as conference rooms and break rooms by limiting occupancy or staggering use. Consider staggering times for staff breaks, to prevent congregation in shared spaces. Always maintain at least six feet of physical distancing when determining room capacity. Calculate only with usable classroom space, understanding that desks and room set-up will require use of all space in the calculation. Wear face coverings except when eating or drinking and minimize time in spaces where face coverings are not consistently worn.

Plan Details for 2h.

Please enter the details of your On-Site or Hybrid plan that correspond to the requirements listed above:

Food Service personnel should follow all existing mandates on health and hygiene and food safety. Any specific measures or intervention will be coordination with the Facilities Manager and the Nutrition

Manager. Additional measures will be endorsed during response to the COVID-19 outbreak to improve infection control measures around food services.

- *Children should wash hands prior to eating.*
- *Students will remain physically distanced while eating.*
- *Children may be encouraged to bring their own meals as feasible, students using school lunch services will be served individually plated meals.*

[\[Link to Nutrition Addendum\]](#)

Assessment Center

Assessment Center will not provide food or permit eating except in the event of glucose intake for a hypoglycemic emergency

Requirements for 2i. TRANSPORTATION

- Include transportation departments (and associated contracted providers, if used) in planning for return to service.
- Buses are cleaned frequently. Conduct targeted cleanings between routes, with a focus on disinfecting frequently touched surfaces of the bus (see section 2j of the **Ready Schools, Safe Learners** guidance).
- Staff must use hand sanitizer (containing between 60-95% alcohol) in between helping each child and when getting on and off the vehicle. Gloves are not recommended; hand sanitizer is strongly preferred. If hand sanitizer is not available, disposable gloves can be used and must be changed to a new pair before helping each child.
 - Develop protocol for loading/unloading that includes visual screening for students exhibiting symptoms and logs for contact-tracing. This must be done at the time of arrival and departure.
 - If a student displays COVID-19 symptoms, provide a face covering (unless they are already wearing one) and keep six feet away from others. Continue transporting the student.
 - The symptomatic student shall be seated in the first row of the bus during transportation, and multiple windows must be opened to allow for fresh air circulation, if feasible.
 - The symptomatic student shall leave the bus first. After all students exit the bus, the seat and surrounding surfaces must be cleaned and disinfected.
 - If arriving at school, notify staff to begin isolation measures.
 - If transporting for dismissal and the student displays an onset of symptoms, notify the school.
- Consult with parents/guardians of students who may require additional support (e.g., students who experience a disability and require specialized transportation as a related service) to appropriately provide service.
- Per federal guidance, drivers must wear properly fitting face coverings at all times. A face shield or goggles may be worn to supplement a properly fitting face covering. Please refer to [the CDC order](#).
- Inform parents/guardians of practical changes to transportation service (i.e., physical distancing at bus stops and while loading/unloading, potential for increased route time due to additional precautions, sanitizing practices, and face coverings).

- Face coverings for all students, applying the guidance in section 1h of the **Ready Schools, Safe Learners** guidance to transportation settings. This prevents eating while on the bus.
- Take all possible actions to maximize ventilation: Dress warmly, keep vents and windows open to the greatest extent possible.

Plan Details for 2i.

Please enter the details of your On-Site or Hybrid plan that correspond to the requirements listed above:

Measures taken on transportation shall follow the processes of school operations to the extent feasible to employ distancing, health and hygiene measures, screening, and PPE. Coordination with the District Transportation Department and Business Manager will be ongoing to determine appropriate resources and capacity. Coordination with the District Office will be ongoing for specific or special needs.

Bus Drivers

- Transport vehicles (e.g., buses) that are used by the school, require that drivers practice all safety actions and protocols as indicated for other staff (e.g., hand hygiene, cloth face coverings).
 - Drivers must wear masks or face coverings as designated in RSSL:
 - This includes while driving, unless the mask or face covering interferes with the driver's vision (e.g., fogging of eyeglasses).
 - Drivers must wear face coverings when not actively driving and operating the bus, including while students are entering or exiting the vehicle. A face shield may be an acceptable alternative.
- All frequently touched surfaces on school buses will be Clean and disinfected at least daily and between use as much as possible.
- To clean and disinfect school buses or other transport vehicles, see guidance for bus transit operators.

Distancing and Staggering Measures

Create distance between children on school buses to the extent possible (e.g., seat children one child per row, skip rows, etc.). While maximum spacing (6 feet) is observed in the school setting, minimum spacing (3 feet) may be promoted to the extent feasible, during shorter durations of exposure such as transport to and from school.

Buses will unload one at a time when arriving at school. When students unload from bus, students will be directed to exit bus one at a time with 3 feet of space between students. Markers shall be placed on the bus floor 3 feet apart to promote minimum spatial distancing while exiting the bus.

Screening

Bus drivers shall passively screen students as they enter the bus. In recognition of transportation and safety measures, and the priority of the district to maintain student safety in all areas, buses will not remain stationed in the roadway for prolonged periods of time to assess students. Measures will be taken to isolate students who become ill on bus routes and as soon as students arrive at school to the extent feasible.

[Link to Transportation Addendum]

Students transported to the Assessment Center and Trillium Family Services are transported by parents.

Requirements for 2j. CLEANING, DISINFECTION, AND VENTILATION

- Clean, sanitize, and disinfect frequently touched surfaces (e.g., door handles, sink handles, drinking fountains, transport vehicles) and shared objects (e.g., toys, games, art supplies) between uses multiple times per day. Maintain clean and disinfected ([CDC guidance](#)) environments, including classrooms, cafeteria settings and restrooms. Provide time and supplies for the cleaning and disinfecting of high-touch surfaces between multiple student uses, even in the same cohort.
- Outdoor learning spaces must have at least 75% of the square footage of its sides open for airflow.
- Outdoor playground structures require normal routine cleaning and do not require disinfection. Shared equipment should be cleaned and disinfected at least daily in accordance with [CDC guidance](#).
- Apply disinfectants safely and correctly following labeling direction as specified by the manufacturer. Keep these products away from students.
- To reduce the risk of asthma, choose disinfectant products on the EPA List N with asthma-safer ingredients (e.g. hydrogen peroxide, citric acid, or lactic acid) and avoid products that mix these with asthma-causing ingredients like peroxyacetic acid, sodium hypochlorite (bleach), or quaternary ammonium compounds.
- Schools with HVAC systems must evaluate the system to minimize indoor air recirculation (thus maximizing fresh outdoor air) to the extent possible. Schools that do not have mechanical ventilation systems shall, to the extent possible, increase natural ventilation by opening windows and interior doors before students arrive and after students leave, and while students are present. Do not prop open doors that can pose a safety or security risk to students and staff (e.g., exterior doors and fire doors that must remain closed.)
- Schools with HVAC systems should ensure all filters are maintained and replaced as necessary to ensure proper functioning of the system.
- All intake ports that provide outside air to the HVAC system should be cleaned, maintained, and cleared of any debris that may affect the function and performance of the ventilation system.
- Consider running ventilation systems continuously and changing the filters more frequently. Do not use fans if they pose a safety or health risk, such as increasing exposure to pollen/allergies or exacerbating asthma symptoms. Consider using window fans or box fans positioned in open windows to blow fresh outdoor air into the classroom via one window, and indoor air out of the classroom via another window. Fans must not be used in rooms with closed windows and doors, as this does not allow for fresh air to circulate.
- Consider the need for increased ventilation in areas where students with special health care needs receive medication or treatments.
- Facilities must be cleaned and disinfected at least daily to prevent transmission of the virus from surfaces (see [CDC's guidance on disinfecting public spaces](#)).
- Consider modification or enhancement of building ventilation where feasible (see [CDC's guidance on ventilation and filtration](#) and [American Society of Heating, Refrigerating, and Air-Conditioning Engineers' guidance](#)).

Plan Details for 2j.

Please enter the details of your On-Site or Hybrid plan that correspond to the requirements listed above:

See [Molalla River School District Comprehensive Communicable Disease Management Plan](#) p. 50.

Cleaning and Disinfection

Routine sanitation measures will be in full effect, including processes to respond to potentially infectious material as outlined in the Exposure Control Plan and enhanced sanitizing and outlined in the Comprehensive Communicable Disease Management Plan.

- All frequently touched surfaces (e.g., shared equipment, door handles, sink handles, drinking fountains) within the school and on school buses will be Clean and disinfected at least daily and between use as much as possible.
 - Use of shared objects (e.g., art supplies or games) should be limited when possible or cleaned between use.
 - As necessary, additional custodial staff will be deployed.
 - Ensure safe and correct use and storage of cleaning and disinfection products, including storing products securely away from children. Use products that meet EPA disinfection criteria.
 - Cleaning products should not be used near children, and staff should ensure that there is adequate ventilation when using these products to prevent children or themselves from inhaling toxic fumes.

Shared Objects

- Discourage sharing of items that are difficult to clean or disinfect.
- Keep each child's belongings separated from others' and in individually labeled containers, cubbies, or areas.
- Ensure adequate supplies to minimize sharing of high touch materials to the extent possible (e.g., assigning each student their own art supplies, equipment) or limit use of supplies and equipment by one group of children at a time and clean and disinfect between use.
- Avoid sharing electronic devices, toys, books, and other games or learning aids.
- If individual supplies are a challenge, ensure that at minimum, students who are immunocompromised will have their own supplies.

Ventilation

- Ensure ventilation systems operate properly and increase circulation of outdoor air as much as possible, for example by opening windows and doors. Do not open windows and doors if doing so poses a safety or health risk (e.g., risk of falling, triggering asthma symptoms) to children using the facility.
- In cases where open doors and windows impact the operational settings of the ventilation system, facilities management will be consulted.
- Regular HVAC maintenance including change of filters every 3 months.

Water Systems

- To minimize the risk of diseases associated with water, take steps to ensure that all water systems and features (e.g., sink faucets, drinking fountains, decorative fountains) are safe to use after a prolonged facility shutdown. Drinking fountains should be cleaned and sanitized but encourage staff and students to bring their own water to minimize use and touching of water fountains.

[Link to Cleaning and Sanitizing Addendum](#)

Requirements for 2k. HEALTH SERVICES

- OAR 581-022-2220 Health Services, requires districts to “maintain a prevention-oriented health services program for all students” including space to isolate sick students and services for

students with special health care needs. While OAR 581-022-2220 does not apply to private schools, private schools must provide a space to isolate sick students and provide services for students with special health care needs.

- Licensed, experienced health staff should be included on teams to determine district health service priorities. Collaborate with health professionals such as school nurses; SBHC staff; mental and behavioral health providers; dental providers; physical, occupational, speech, and respiratory therapists; and School Based Health Centers (SBHC).

Plan Details for 2k.

Please enter the details of your On-Site or Hybrid plan that correspond to the requirements listed above:

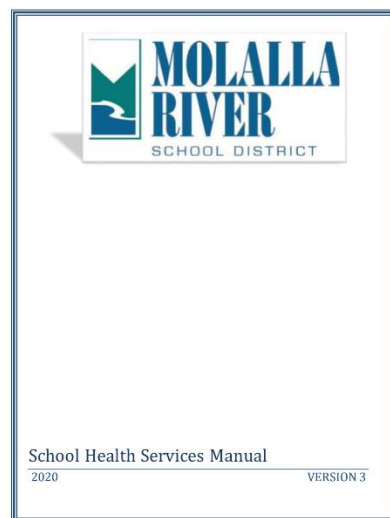
Ongoing school health services must be provided in tandem with COVID-19 specific interventions. School Health Services should continue operations as per the district School Health Services Procedure Manual.

Special consideration should be paid to where care (such as diabetic care or medication administration) is provided for high-risk students in vicinity to isolation rooms.

Additional considerations must be paid to high risk clinical procedures in the school setting, Additional Guidance for school nurses must be observed in regard to close proximity procedures.

Routine annual training should observe social distanced methods or online delivery as feasible in each building.

Sending children to health rooms for minor incidences should be minimized, rather essential services should be prioritized such as medication administration, daily chronic care, or significant injury to reduce congestion and exposure potential.



Requirements for 2I. BOARDING SCHOOLS AND RESIDENTIAL PROGRAMS ONLY

- Provide specific plan details and adjustments in Operational Blueprints that address staff and student safety, which includes how you will approach:
 - Contact tracing
 - The intersection of cohort designs in residential settings (by wing or common restrooms) with cohort designs in the instructional settings. The same cohorting parameter limiting total cohort size to 100 people applies.
 - Quarantine of exposed staff or students
 - Isolation of infected staff or students
 - Communication and designation of where the “household” or “family unit” applies to your residents and staff
- Review and take into consideration [CDC guidance](#) for shared or congregate housing:
 - Not allow more than two students to share a residential dorm room unless alternative housing arrangements are impossible
 - Ensure at least 64 square feet of room space per resident
 - Reduce overall residential density to ensure sufficient space for the isolation of sick or potentially infected individuals, as necessary;

- Configure common spaces to maximize physical distancing;
- Provide enhanced cleaning;
- Establish plans for the containment and isolation of on-campus cases, including consideration of PPE, food delivery, and bathroom needs.

Exception

- K-12 boarding schools that do not meet the Advisory Metrics (Section 0 of the **Ready Schools, Safe Learners** guidance) may operate, in consultation with their Local Public Health Authority, provided that:
 - They have a current and complete RSSL Blueprint and are complying with Sections 1-3 of the **Ready Schools, Safe Learners** guidance and any other applicable sections, including Section 2L of the **Ready Schools, Safe Learners** guidance.
 - The school maintains a fully closed residential campus (no non-essential visitors allowed), and normal day school operations are only offered remotely through distance learning.
 - There have been no confirmed cases of COVID-19 among school staff or students in the past 14 days.
 - Less than 10% of staff, employees, or contracts (in total) are traveling to or from campus. Staff in this designation will:
 - Limit travel to essential functions.
 - Carefully monitor their own health daily and avoid coming to campus at any potential symptom of COVID-19.
 - Any boarding students newly arriving to campus will either:
 - Complete a quarantine at home for 14 days* prior to traveling to the school, OR
 - Quarantine on campus for 14 days. *
 - A 14-day quarantine is the safest option to prevent the spread of COVID-19 to others. However, in either option above, for boarding students who have not developed any symptoms, schools may consider ending quarantine after 10 days without any testing, or after 7 days with a negative result on a COVID-19 viral test collected within 48 hours before ending quarantine, unless otherwise directed by the local public health authority (LPHA).
 - Student transportation off-campus is limited to medical care.

Plan Details for 2l.

Please enter the details of your On-Site or Hybrid plan that correspond to the requirements listed above:

N/A

Requirements for 2m. SCHOOL EMERGENCY PROCEDURES AND DRILLS

- In accordance with [ORS 336.071](#) and [OAR 581-022-2225](#) all schools (including those operating a Comprehensive Distance Learning model) are required to instruct students on emergency procedures. Schools that operate an On-Site or Hybrid model need to instruct and practice drills on emergency procedures so that students and staff can respond to emergencies.
 - At least 30 minutes in each school month must be used to instruct students on the emergency procedures for fires, earthquakes (including tsunami drills in appropriate zones), and safety threats.

- Fire drills must be conducted monthly.
- Earthquake drills (including tsunami drills and instruction for schools in a tsunami hazard zone) must be conducted two times a year.
- Safety threats including procedures related to lockdown, lockout, shelter in place and evacuation and other appropriate actions to take when there is a threat to safety must be conducted two times a year.
- Drills can and should be carried out as close as possible to the procedures that would be used in an actual emergency. For example, a fire drill must be carried out with the same alerts and same routes as normal. If appropriate and practicable, COVID-19 physical distancing measures can be implemented, but only if they do not compromise the drill.
- When or if physical distancing must be compromised, drills must be completed in less than 15 minutes.
- Drills shall not be practiced unless they can be practiced correctly.
- Train staff on safety drills prior to students arriving on the first day on campus in hybrid or face-to-face engagement.
- If on a hybrid schedule, conduct multiple drills each month to ensure that all cohorts of students have opportunities to participate in drills (i.e., schedule on different cohort days throughout the year).
- Students must wash hands with soap and water for 20 seconds or use an alcohol-based hand sanitizer with 60-95% alcohol after a drill is complete.

Plan Details for 2m.

Please enter the details of your On-Site or Hybrid plan that correspond to the requirements listed above:

Per existing rules, statutes and board policy, drills can and should be carried out as close as possible to the procedures that would be used in an actual emergency. For example, a fire drill should be carried out with the same alerts and same routes as normal. If appropriate and practicable, COVID-19 physical distancing measures can be implemented, but only if they do not compromise the drill.

Staff should be trained in changes to drills prior to return to school and conducting any drills in the school setting. All standard collaboration (i.e., fire department, alarm company) and documentation remains required.

On site or Hybrid Models

Schools that operate an On-Site or Hybrid model need to instruct and practice drills on emergency procedures so that students and staff can respond to emergencies.

- *Principles of infection control and physical distancing will be practiced to the fullest extent feasible during emergency drills.*
- *At minimum of 30 minutes in each school month will be used to instruct students on the emergency procedures for fires, earthquakes, and safety threats.*
 - *Actual drills must be less than 15 minutes if physical distancing cannot be maintained.*
- *Fire drills will be conducted monthly.*
- *Earthquake drills must be conducted two times a year.*
- *Safety threats including procedures related to lockdown, lockout, shelter in place and evacuation and other appropriate actions to take when there is a threat to safety will be conducted two times a year.*

- *Drill will need to be conducted multiple times on alternate cohort days per month to address all cohorts in hybrid models and allow all students an opportunity to participate.*
- *Hand hygiene will be endorsed following return to classroom after the drill is complete.*

[\[Link to Emergency Drill Addendum\]](#)

Requirements for 2n. SUPPORTING STUDENTS WHO ARE DYSREGULATED, ESCALATED, AND/OR EXHIBITING SELF-REGULATORY CHALLENGES

- Utilize the components of Collaborative Problem Solving or a similar framework to continually provide instruction and skill-building/training related to the student’s demonstrated lagging skills.
- Take proactive/preventative steps to reduce antecedent events and triggers within the school environment.
- Be proactive in planning for known behavioral escalations (e.g., self-harm, spitting, scratching, biting, eloping, failure to maintain physical distance). Adjust antecedents where possible to minimize student and staff dysregulation. Recognize that there could be new and different antecedents and setting events with the additional requirements and expectations for the 2020-21 school year.
- Establish a proactive plan for daily routines designed to build self-regulation skills; self-regulation skill-building sessions can be short (5-10 minutes), and should take place at times when the student is regulated and/or is not demonstrating challenging behaviors.

Plan Details for 2n.

Please enter the details of your On-Site or Hybrid plan that correspond to the requirements listed above:

Schools in MRSD K-8 embrace practices of MTSS with the framework of Positive Behavior Intervention and Supports. Proactive procedures such as daily routines and self-regulation skills are taught and reinforced with consistent expectations taught across the building. The district uses functional behavior assessment to drive individual support plans that addresses preventative and antecedent events and triggers.

Select staff in each building K-12 and Transition Program are trained in de-escalation and crisis prevention are trained each August using the Nonviolent Crisis Institute’s CPI training methodology. All staff are trained on de-escalation strategies and the definitions of restraint and seclusion.

School staff are undergoing a year long, monthly training to learn and understand their own social emotional competencies such as:

- *Self-Awareness*
- *Self-Management*
- *Social Awareness*
- *Relationship Skills*
- *Goal Directed Behavior*
- *Personal Responsibility*
- *Decision Making*
- *Optimistic Thinking*

Requirements for 2o. PROTECTIVE PHYSICAL INTERVENTION

- In accordance with ORS 339.291, ORS 339.300, and OAR 581-015-2556, if restraint or seclusion is used on a student, it must be imposed by personnel who are trained in approved restraint or seclusion programs, or by other personnel who are otherwise available in the case of emergency circumstance. Staff may engage in close contact (less than 6 feet of physical distance) with no more than two other individuals on a given day for the purposes of assessing physical skills associated with required training components of approved programs, under the following conditions.
 - Only participants and trainers are allowed to be present for these sessions.
 - Participants and trainers must be screened for symptoms associated with COVID-19 prior to the start of each session. Anyone exhibiting symptoms, by visual screening or self-report, shall not participate in training at that time.
 - All participants and trainers must wash their hands immediately prior to and following direct physical contact with another person.
 - All people in close contact for this purpose must wear appropriate Personal Protective Equipment (PPE), including but not limited to, medical grade N95 face masks, face shield, gloves, and gown.
- Reusable Personal Protective Equipment (PPE) must be cleaned and disinfected following the manufacturer’s recommendation, after every episode of physical intervention (see section 2j. Cleaning, Disinfection, and Ventilation). Single-use disposable PPE must not be re-used.

Plan Details for 2o.

Please enter the details of your On-Site or Hybrid plan that correspond to the requirements listed above:

See Molalla River School District Comprehensive Communicable Disease Management Plan 49-50 and 51-53,

- *Only trained personnel will engage in close proximity interactions.*
- *When training occurs for close proximity interactions all staff will practice hand hygiene, wear PPE and attest to being symptom free and without contact of a confirmed case of COVID-19. Ill employees or contacts of cases will be isolated and quarantined per protocol.*
- *Close proximity interactions will be limited to less than 15 minutes in training and in practice as feasible.*
- *Disposable, single use, medical grade PPE will be used for close proximity interactions, when feasible.*
- *Staff assigned as 1:1 student aid will wear medical grade masks and face shields.*
- *When double PPE is warranted, face shields will be appropriately sanitized as per manufacturer’s recommendation with appropriate sanitizer.*

Response to Outbreak (Section 3 of the RSSL Guidance)

Requirements for 3a. PREVENTION AND PLANNING

- Review the “[Planning for COVID-19 Scenarios in Schools](#)” toolkit.
- Coordinate with Local Public Health Authority (LPHA) to establish communication channels related to current transmission level.

Plan Details for 3a.

Please enter the details of your On-Site or Hybrid plan that correspond to the requirements listed above:

See the Pandemic Plan in the [Molalla River School District Comprehensive Communicable Disease Management Plan](#)

pages 22-27 and page 71-72

[[Link to Communication & Response Algorithm](#)]

[[Link to Planning for COVID-19 Scenarios in School](#)]

Requirements for 3b. RESPONSE

- Review and utilize the “[Planning for COVID-19 Scenarios in Schools](#)” toolkit.
- Ensure continuous services and implement Comprehensive Distance Learning.
- Continue to provide meals for students.

Plan Details for 3b.

Please enter the details of your On-Site or Hybrid plan that correspond to the requirements listed above:

See [Molalla River School District Comprehensive Communicable Disease Management Plan](#)

- *Communicable Disease Plan pages 9-12*
- *Pandemic Plan pages 22-27*
- *Metrics for CDL pages 33-34*
- *COVID-19 Specific Addendum: pages 33-102*
 - *Covid-19 Cases/Contacts/Scenarios: page 49-50*

As needed Comprehensive Distance Learning (CDL) will resume full time in place of hybrid models when directed by LPHA or as consistent with metrics based on outbreaks, clusters, or community morbidity.

Sack Lunch Meals will be provided to students during CDL.

Requirements for 3c. RECOVERY AND REENTRY

- Review and utilize the “[Planning for COVID-19 Scenarios in Schools](#)” toolkit.
- Clean, sanitize, and disinfect surfaces (e.g. door handles, sink handles, drinking fountains, transport vehicles) and follow [CDC guidance](#) for classrooms, cafeteria settings, restrooms, and playgrounds.
- When bringing students back into On-Site or Hybrid instruction, consider smaller groups, cohorts, and rotating schedules to allow for a safe return to schools.

Plan Details for 3c.

Please enter the details of your On-Site or Hybrid plan that correspond to the requirements listed above:

See [Molalla River School District Comprehensive Communicable Disease Management Plan Pandemic Plan pages 22-27](#)

- *COVID-19 Specific Addendum: pages 33-102*
 - *Covid-19 Cases/Contacts/Scenarios: page 54*

Blueprint

- See Section 1d *Cohorting*.
- See Section 2j *Cleaning, Disinfecting and Ventilation*

[\[Link to Isolation and Quarantine\]](#)

[\[Link to Communication & Response Algorithm\]](#)

[\[Link to Cleaning and Sanitizing Addendum\]](#)

[\[Link to Planning for COVID-19 Scenarios in School\]](#)

COVID-19 communication to families are incrementally developed under the guidance of public health and ODE among the response team and are distributed to the Molalla River School District (MRSD) family population electronically via School Messenger and archived on the MRSD Reopening Dashboard

ASSURANCES

This section must be completed by any public school that is providing instruction through On-Site or Hybrid Instructional Models.

Schools providing Comprehensive Distance Learning Instructional Models do not need to complete this section unless the school is implementing the Limited In-Person Instruction provision under the Comprehensive Distance Learning guidance.

This section does not apply to private schools.

Let us know whether statement 1 or statement 2 applies to your school plan by typing “Yes” after the prompt that follows the correct statement:

1. We affirm that, in addition to meeting the requirements as outlined above, our school plan has met the collective requirements from ODE/OHA guidance related to the 2020-21 school year, including but not limited to requirements from:
 - Sections 4, 5, 6, 7, and 8 of the [Ready Schools, Safe Learners](#) guidance,
 - The [Comprehensive Distance Learning](#) guidance,
 - The [Ensuring Equity and Access: Aligning Federal and State Requirements](#) guidance, and
 - [Planning for COVID-19 Scenarios in Schools](#)

Does statement 1 apply to your school?

2. We affirm that we cannot meet all of the collective requirements from ODE/OHA guidance related to the 2020-21 school year from:

- Sections 4, 5, 6, 7, and 8 of the [Ready Schools, Safe Learners](#) guidance,
- The [Comprehensive Distance Learning](#) guidance,
- The [Ensuring Equity and Access: Aligning Federal and State Requirements](#) guidance, and
- [Planning for COVID-19 Scenarios in Schools](#)

We will continue to work towards meeting them and have noted and addressed which requirement(s) we are unable to meet in the table titled “Assurance Compliance and Timeline” below.

Does statement 2 apply to your school?

No

Assurance Compliance and Timeline

If a district/school cannot meet any of the requirements from the sections listed below, provide a plan and timeline to meet the requirement:

- Section 4: Equity
- Section 5: Instruction
- Section 6: Family, Community, Engagement
- Section 7: Mental, Social, and Emotional Health
- Section 8: Staffing and Personnel

Please type below which requirements cannot be met and the plan and timeline to meet them. Be sure to include how and why the school is currently unable to meet them.

School’s response: *N/A The district has a plan to be compliant with all measures and timelines.*